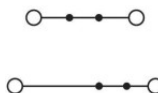
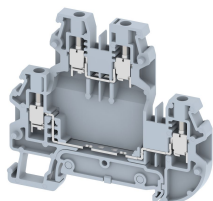


## TQ2.5-2T

Terminal Type - TQ2.5-2T, Multi-level Feed-through terminal block, nominal voltage: 500 V, nominal current: 24 A, Rated cross-section: 2.5 mm<sup>2</sup>, connection method: Screw connection, number of connections: 4, cross-section: 0.14 mm<sup>2</sup> - 4.0 mm<sup>2</sup>, mounting type: TS 35/7.5, TS 35/15



### Approvals



### General Information

Product Name	TQ2.5-2T
Connection Method	Screw Connection
Rating	500 V/24 A/2.5 mm <sup>2</sup> /0.4 Nm
HSN Number	85389000
Standard Packing Qty(in No)	100
Country Of Origin	India
Screw thread	M2.6

### Dimensions & Weight

Width	5 mm	0.2 inch
Length	70.6 mm	2.78 inch
Height	62.5 mm	2.46 inch
Weight of std. Packing Unit	1.5 Kg	

### Material Data

Insulating Material	Polyamide 6,6
Standard Colour	Gray
Colour Variants	Red , Yellow , Blue , Black , Green , Khakhi ,

### Rated Conductor Size

Conductor cross section flexible min	0.14 mm <sup>2</sup>
Conductor cross section flexible max	2.5 mm <sup>2</sup>
Conductor cross section solid min	0.14 mm <sup>2</sup>
Conductor cross section solid max	4 mm <sup>2</sup>

### Ratings - IEC

Connection in acc. with standard	IEC 60947-7-1
Nominal Voltage $U_n$	500 V
Nominal Current $I_n$	24 A
Nominal cross section	2.5 mm <sup>2</sup>
Short-time current	0.3 kA
Rated surge voltage	8 kV
Degree of pollution	3

### Ratings - ATEX

ATEX Standard	EN 60049-7
ATEX Nominal Voltage $U_n$	500 V
ATEX Nominal Current $I_n$	21 A
ATEX Cross Sec. Flexible Max.	2.5 mm <sup>2</sup>

### Ratings - CSA

CSA Standard	CSA C22.2 NO 158
B - CSA Nominal Voltage $U_N$	300 V
B - CSA Nominal Current $I_N$	20 A
B - CSA Wire Min	24 AWG
B - CSA Wire Max	12 AWG

### Ratings - UL

UL Standard	UL 1059
B - UL Nominal Voltage $U_N$	300 V
B - UL Nominal Current $I_N$	20 A
B - UL Wire Min	24 AWG
B - UL Wire Max	12 AWG