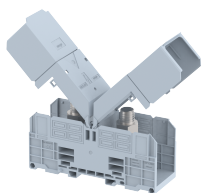


## SPT300

Terminal Type - SPT300, High current connectors with secured hinged cover, nominal voltage: 1000 V AC/1500 V DC, Rated cross-section - 300 mm<sup>2</sup>, nominal current: 520 A, connection method: Bolt connection, number of connections: 2, cross-section: 35 mm<sup>2</sup> - 300 mm<sup>2</sup>, 4 AWG - 750 KCMIL, mounting type: TS 35/7.5, TS 35/15



### Approvals



### General Information

Product Name	SPT300
Connection Method	Bolt Connection
Rating	1000 V/520 A/300 mm <sup>2</sup> /25 Nm
HSN Number	8904476702654
Standard Packing Qty(in No)	5
Country Of Origin	India
Screw thread	M16

### Dimensions & Weight

Width	55 mm	2.17 inch
Length	286.8 mm	11.29 inch
Height	89.3 mm	3.52 inch
Weight of std. Packing Unit	3.51 Kg	

### Material Data

Insulating Material	Polyamide 6,6
Standard Colour	Gray
Colour Variants	Red , Yellow , Blue , Black , Green , Khakhi ,

### Rated Conductor Size

Conductor cross section flexible min	35 mm <sup>2</sup>
Conductor cross section flexible max	300 mm <sup>2</sup>
Conductor cross section solid min	35 mm <sup>2</sup>
Conductor cross section solid max	300 mm <sup>2</sup>

### Ratings - IEC

Connection in acc. with standard	IEC 60947-7-1
Nominal Voltage $U_n$	1000 V
Nominal Current $I_n$	520 A
Nominal cross section	300 mm <sup>2</sup>
Short-time current	36 kA
Rated surge voltage	8 kV
Degree of pollution	3

### Ratings - ATEX

ATEX Standard	EN 60079-7
ATEX Nominal Voltage $U_n$	1000 V
ATEX Nominal Current $I_n$	520 A
ATEX Cross Sec. Flexible Max.	300 mm <sup>2</sup>

### Ratings - CSA

CSA Standard	
B - CSA Nominal Voltage $U_N$	V
B - CSA Nominal Current $I_N$	A
B - CSA Wire Min	AWG
B - CSA Wire Max	KCMIL

### Ratings - UL

UL Standard	UL 1059
B - UL Nominal Voltage $U_N$	1000 V
B - UL Nominal Current $I_N$	475 A
B - UL Wire Min	4 AWG
B - UL Wire Max	750 KCMIL