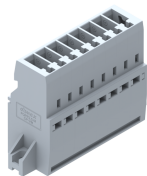


## **PQPP2.5M-VM8W**

Socket Type - PQPP2.5M-VM8W , nominal voltage: 500V, nominal current: 24 A, connection method: Push-in connection, number of connections: 8, number of positions: 8, cross section: 0.08 mm<sup>2</sup> - 4 mm<sup>2</sup>, AWG : 24-12, mounting type: Panel mounting / Surface mounting (Vertical type)



### Approvals



### General Information

Product Name	PQPP2.5M-VM8W
Connection Method	Push In Connection
Rating	500 V/24 A/2.5 mm <sup>2</sup> /NAP Nm
HSN Number	8904476705242
Standard Packing Qty(in No)	100
Country Of Origin	India
Screw thread	NAP

### Dimensions & Weight

Width	55.5 mm	2.19 inch
Length	18.8 mm	0.74 inch
Height	38 mm	1.5 inch
Weight of std. Packing Unit	2.94 Kg	

### Material Data

Insulating Material	Polyamide 6,6
Standard Colour	Gray
Colour Variants	Red , Yellow , Blue , Black , Green , Khakhi ,

### Rated Conductor Size

Conductor cross section flexible min	0.14 mm <sup>2</sup>
Conductor cross section flexible max	2.5 mm <sup>2</sup>
Conductor cross section solid min	0.08 mm <sup>2</sup>
Conductor cross section solid max	4 mm <sup>2</sup>

**Ratings - IEC**

Connection in acc. with standard	IEC 60947-7-1
Nominal Voltage $U_n$	500 V
Nominal Current $I_n$	24 A
Nominal cross section	2.5 mm <sup>2</sup>
Short-time current	0.3 kA
Rated surge voltage	8 kV
Degree of pollution	3

