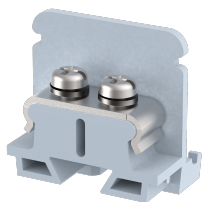


PBTM3

Terminal Type - PBTM3 , Mini Feed-through terminal block, nominal voltage: 250 V, nominal current: 20 A, Rated cross-section - 1.5 mm², connection method: Screw clamp connection, number of connections: 2, cross section: 0.2 mm² - 1.5 mm², mounting type: Panel mounted



Approvals



General Information

Product Name	PBTM3
Connection Method	Screw Connection
Rating	250 V/20 A/1.5 mm ² /0.5 Nm
HSN Number	NAV
Standard Packing Qty(in No)	100
Country Of Origin	India
Screw thread	M3

Dimensions & Weight

Width	15 mm	0.59 inch
Length	25 mm	0.98 inch
Height	25 mm	0.98 inch
Weight of std. Packing Unit	0.72 Kg	

Material Data

Insulating Material	Polyamide 6,6
Standard Colour	Gray
Colour Variants	Red , Yellow , Blue , Black , Green , Khakhi ,

Rated Conductor Size

Conductor cross section flexible min	0.2 mm ²
Conductor cross section flexible max	1.5 mm ²
Conductor cross section solid min	0.2 mm ²
Conductor cross section solid max	1.5 mm ²

Ratings - IEC

Connection in acc. with standard	IEC 60947-7-1
Nominal Voltage U_n	250 V
Nominal Current I_n	20 A
Nominal cross section	1.5 mm ²
Short-time current	0.18 kA
Rated surge voltage	4 kV
Degree of pollution	3

Ratings - ATEX

ATEX Standard	EN 60079-7
ATEX Nominal Voltage U_n	320 V
ATEX Nominal Current I_n	18 A
ATEX Cross Sec. Flexible Max.	1.5 mm ²

Ratings - CSA

CSA Standard	
B - CSA Nominal Voltage U_N	V
B - CSA Nominal Current I_N	A
B - CSA Wire Min	AWG
B - CSA Wire Max	AWG

Ratings - UL

UL Standard	
B - UL Nominal Voltage U_N	V
B - UL Nominal Current I_N	A
B - UL Wire Min	AWG
B - UL Wire Max	AWG