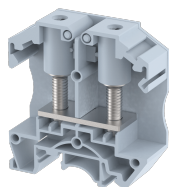


OAT25

Terminal Type - OAT25 , Feed through terminal block with secured hinged cover, nominal voltage: 1000 V, nominal current: 125 A, connection method: Stud type connection, number of connections: 2, cross section: 1.5 mm² - 35 mm², Rated Cross-section : 35 mm² , mounting type: TS 35/7.5, TS 35/15 , TS 32



Approvals



General Information

Product Name	OAT25
Connection Method	Bolt Connection
Rating	1000 V/125 A/35 mm ² /2.5 Nm
HSN Number	NAV
Standard Packing Qty(in No)	50
Country Of Origin	India
Screw thread	M6

Dimensions & Weight

Width	18 mm	0.71 inch
Length	60 mm	2.36 inch
Height	63 mm	2.48 inch
Weight of std. Packing Unit	2.41 Kg	

Material Data

Insulating Material	Polyamide 6,6
Standard Colour	Gray
Colour Variants	Red , Yellow , Blue , Black , Green , Khakhi ,

Rated Conductor Size

Conductor cross section flexible min	1.5 mm ²
Conductor cross section flexible max	35 mm ²
Conductor cross section solid min	1.5 mm ²
Conductor cross section solid max	35 mm ²

Ratings - IEC

Connection in acc. with standard	IEC 60947-7-1
Nominal Voltage U_n	1000 V
Nominal Current I_n	125 A
Nominal cross section	35 mm ²
Short-time current	4.2 kA
Rated surge voltage	8 kV
Degree of pollution	3

Ratings - ATEX

ATEX Standard	EN 60079-7
ATEX Nominal Voltage U_n	800 V
ATEX Nominal Current I_n	112 A
ATEX Cross Sec. Flexible Max.	3.5 mm ²

Ratings - CSA

CSA Standard	
B - CSA Nominal Voltage U_N	V
B - CSA Nominal Current I_N	A
B - CSA Wire Min	AWG
B - CSA Wire Max	AWG

Ratings - UL

UL Standard	
B - UL Nominal Voltage U_N	V
B - UL Nominal Current I_N	A
B - UL Wire Min	AWG
B - UL Wire Max	AWG