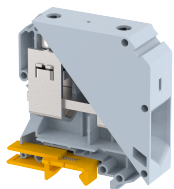


## KUT95

Terminal Type - KUT95 , Feed-through terminal block, nominal voltage: 1000 V, nominal current: 232 A, connection method: Screw clamp connection , Operated by - 6 mm Allen key , number of connections: 2, Rated cross section: 95 mm<sup>2</sup>, cross section: 25 mm<sup>2</sup> - 120 mm<sup>2</sup>, AWG: 4/0 - 2 , mounting type: TS35/7.5 , TS35/15 , and TS32



### Approvals



### General Information

Product Name	KUT95
Connection Method	Screw Connection
Rating	1000 V/232 A/95 mm <sup>2</sup> /6 Nm
HSN Number	8904476702173
Standard Packing Qty(in No)	10
Country Of Origin	India
Screw thread	M8

### Dimensions & Weight

Width	25 mm	0.98 inch
Length	83 mm	3.27 inch
Height	90 mm	3.54 inch
Weight of std. Packing Unit	2.29 Kg	

### Material Data

Insulating Material	Polyamide 6,6
Standard Colour	Gray
Colour Variants	Red , Yellow , Blue , Black , Green , Khakhi ,

### Rated Conductor Size

Conductor cross section flexible min	25 mm <sup>2</sup>
Conductor cross section flexible max	95 mm <sup>2</sup>
Conductor cross section solid min	25 mm <sup>2</sup>
Conductor cross section solid max	120 mm <sup>2</sup>

### Ratings - IEC

Connection in acc. with standard	IEC 60947-7-1
Nominal Voltage $U_n$	1000 V
Nominal Current $I_n$	232 A
Nominal cross section	95 mm <sup>2</sup>
Short-time current	11.40 kA
Rated surge voltage	12 kV
Degree of pollution	3

### Ratings - ATEX

ATEX Standard	EN-60079-7
ATEX Nominal Voltage $U_n$	1000 V
ATEX Nominal Current $I_n$	232 A
ATEX Cross Sec. Flexible Max.	95 mm <sup>2</sup>

### Ratings - CSA

CSA Standard	CSA C22.2 NO 158
B - CSA Nominal Voltage $U_N$	600 V
B - CSA Nominal Current $I_N$	230 A
B - CSA Wire Min	2 AWG
B - CSA Wire Max	4/0 AWG

### Ratings - UL

UL Standard	UL 1059
B - UL Nominal Voltage $U_N$	600 V
B - UL Nominal Current $I_N$	230 A
B - UL Wire Min	2 AWG
B - UL Wire Max	4/0 AWG