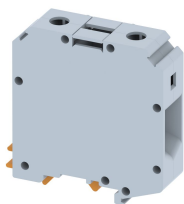


## KUT50

Terminal Type - KUT50 , Feed-through terminal block, nominal voltage: 1000 V, nominal current: 150 A, connection method: Screw connection, number of connections: 2, Rated cross section: 50 mm<sup>2</sup>, cross-section: 16-70 , AWG: 6 - 2/0 , mounting type: TS35/7.5 , TS35/15 , and TS32



### Approvals



### General Information

Product Name	KUT50
Connection Method	Screw Connection
Rating	1000 V/150 A/50 mm <sup>2</sup> /3 Nm
HSN Number	8904476702159
Standard Packing Qty(in No)	10
Country Of Origin	India
Screw thread	M6

### Dimensions & Weight

Width	20.5 mm	0.81 inch
Length	71 mm	2.8 inch
Height	76 mm	2.99 inch
Weight of std. Packing Unit	1.24 Kg	

### Material Data

Insulating Material	Polyamide 6,6
Standard Colour	Gray
Colour Variants	Red , Yellow , Blue , Black , Green , Khakhi ,

### Rated Conductor Size

Conductor cross section flexible min	16 mm <sup>2</sup>
Conductor cross section flexible max	50 mm <sup>2</sup>
Conductor cross section solid min	16 mm <sup>2</sup>
Conductor cross section solid max	70 mm <sup>2</sup>

### Ratings - IEC

Connection in acc. with standard	IEC 60947-7-1
Nominal Voltage $U_n$	1000 V
Nominal Current $I_n$	150 A
Nominal cross section	50 mm <sup>2</sup>
Short-time current	6 kA
Rated surge voltage	12 kV
Degree of pollution	3

### Ratings - ATEX

ATEX Standard	EN-60079-7
ATEX Nominal Voltage $U_n$	1000 V
ATEX Nominal Current $I_n$	150 A
ATEX Cross Sec. Flexible Max.	50 mm <sup>2</sup>

### Ratings - CSA

CSA Standard	CSA C22.2 NO 158
B - CSA Nominal Voltage $U_N$	600 V
B - CSA Nominal Current $I_N$	150 A
B - CSA Wire Min	6 AWG
B - CSA Wire Max	2/0 AWG

### Ratings - UL

UL Standard	UL 1059
B - UL Nominal Voltage $U_N$	600 V
B - UL Nominal Current $I_N$	150 A
B - UL Wire Min	6 AWG
B - UL Wire Max	2/0 AWG