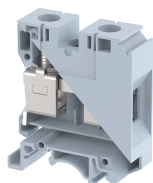


## KUT35

Terminal Type - KUT35 , Feed-through terminal block, nominal voltage: 1000 V, nominal current: 125 A, connection method: Screw connection, number of connections: 2, Rated cross section: 35 mm<sup>2</sup>, cross section: 10 mm<sup>2</sup> - 35 mm<sup>2</sup>, AWG: 1-8, mounting type: TS35/7.5, TS35/15, and TS32



### Approvals



### General Information

Product Name	KUT35
Connection Method	Screw Connection
Rating	1000 V/125 A/35 mm <sup>2</sup> /3 Nm
HSN Number	85389000
Standard Packing Qty(in No)	50
Country Of Origin	India
Screw thread	M6

### Dimensions & Weight

Width	17 mm	0.67 inch
Length	51 mm	2.01 inch
Height	58 mm	2.28 inch
Weight of std. Packing Unit	2.9 Kg	

### Material Data

Insulating Material	Polyamide 6,6
Standard Colour	Gray
Colour Variants	Red , Yellow , Blue , Black , Green , Khakhi ,

### Rated Conductor Size

Conductor cross section flexible min	10 mm <sup>2</sup>
Conductor cross section flexible max	35 mm <sup>2</sup>
Conductor cross section solid min	10 mm <sup>2</sup>
Conductor cross section solid max	50 mm <sup>2</sup>

### Ratings - IEC

Connection in acc. with standard	IEC-60947-7-1
Nominal Voltage $U_n$	1000 V
Nominal Current $I_n$	125 A
Nominal cross section	35 mm <sup>2</sup>
Short-time current	4.2 kA
Rated surge voltage	8 kV
Degree of pollution	3

### Ratings - ATEX

ATEX Standard	EN-60079-7
ATEX Nominal Voltage $U_n$	630 V
ATEX Nominal Current $I_n$	125 A
ATEX Cross Sec. Flexible Max.	35 mm <sup>2</sup>

### Ratings - CSA

CSA Standard	CSA C22.2 NO 158
B - CSA Nominal Voltage $U_N$	600 V
B - CSA Nominal Current $I_N$	140 A
B - CSA Wire Min	8 AWG
B - CSA Wire Max	1 AWG

### Ratings - UL

UL Standard	UL 1059
B - UL Nominal Voltage $U_N$	600 V
B - UL Nominal Current $I_N$	140 A
B - UL Wire Min	8 AWG
B - UL Wire Max	1 AWG