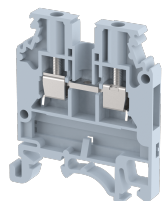


KUT2.5N

Terminal Type - KUT2.5N , Feed-through terminal block for photo voltaic applications, nominal voltage: 1000 V, nominal current : 24 A , Rated Cross-section : 2.5mm² , connection method: Screw connection, number of connections: 2, cross section: 0.5 mm² - 4 mm², AWG: 20 - 12, mounting type: TS 35/7.5, TS 35/15 , TS 32



Approvals



General Information

Product Name	KUT2.5N
Connection Method	Screw Connection
Rating	1000 V/24 A/2.5 mm ² /0.4 Nm
HSN Number	8904476702180
Standard Packing Qty(in No)	100
Country Of Origin	India
Screw thread	M2.6

Dimensions & Weight

Width	5 mm	0.2 inch
Length	44.25 mm	1.74 inch
Height	50.8 mm	2 inch
Weight of std. Packing Unit	0.85 Kg	

Material Data

Insulating Material	Polyamide 6,6
Standard Colour	Gray
Colour Variants	Red , Yellow , Blue , Black , Green , Khakhi ,

Rated Conductor Size

Conductor cross section flexible min	0.5 mm ²
Conductor cross section flexible max	2.5 mm ²
Conductor cross section solid min	0.5 mm ²
Conductor cross section solid max	4 mm ²

Ratings - IEC

Connection in acc. with standard	IEC 60947-7-1
Nominal Voltage U_n	1000 V
Nominal Current I_n	24 A
Nominal cross section	2.5 mm ²
Short-time current	0.3 kA
Rated surge voltage	8 kV
Degree of pollution	3

Ratings - ATEX

ATEX Standard	EN 60079-7
ATEX Nominal Voltage U_n	800 V
ATEX Nominal Current I_n	20 A
ATEX Cross Sec. Flexible Max.	2.5 mm ²

Ratings - CSA

CSA Standard	
B - CSA Nominal Voltage U_N	0 V
B - CSA Nominal Current I_N	0 A
B - CSA Wire Min	0 AWG
B - CSA Wire Max	0 AWG

Ratings - UL

UL Standard	UL 1059
B - UL Nominal Voltage U_N	600 V
B - UL Nominal Current I_N	20 A
B - UL Wire Min	20 AWG
B - UL Wire Max	12 AWG