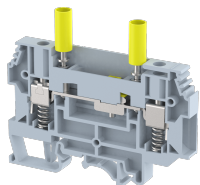


KULTD6

Terminal Type - KULTD6, Test Disconnect Terminal Block, nominal voltage: 1000 V, nominal current: 41 A, Rated cross-section- 6 mm² , connection method: Screw connection with spring support, number of connections: 2, cross-section: 0.5 mm² - 10 mm² , AWG: 24-8 , mounting type: TS35/7.5, TS35/15 and TS32



Approvals



General Information

Product Name	KULTD6
Connection Method	Screw Connection with spring support
Rating	1000 V/41 A/6 mm ² /1 Nm
HSN Number	8904476703514
Standard Packing Qty(in No)	50
Country Of Origin	India
Screw thread	M3.5

Dimensions & Weight

Width	8 mm	0.31 inch
Length	85.2 mm	3.35 inch
Height	71.15 mm	2.8 inch
Weight of std. Packing Unit	2.05 Kg	

Material Data

Insulating Material	Polyamide 6,6
Standard Colour	Gray
Colour Variants	Red , Yellow , Blue , Black , Green , Khakhi ,

Rated Conductor Size

Conductor cross section flexible min	0.5 mm ²
Conductor cross section flexible max	6 mm ²
Conductor cross section solid min	0.5 mm ²
Conductor cross section solid max	10 mm ²

Ratings - IEC

Connection in acc. with standard	IEC 60947-7-1
Nominal Voltage U_n	1000 V
Nominal Current I_n	41 A
Nominal cross section	6 mm ²
Short-time current	0.72 kA
Rated surge voltage	8 kV
Degree of pollution	3

Ratings - ATEX

ATEX Standard	EN 60079-7
ATEX Nominal Voltage U_n	550 V
ATEX Nominal Current I_n	32 A
ATEX Cross Sec. Flexible Max.	6 mm ²

Ratings - CSA

CSA Standard	CSA C22.2 No. 158
B - CSA Nominal Voltage U_N	600 V
B - CSA Nominal Current I_N	35 A
B - CSA Wire Min	24 AWG
B - CSA Wire Max	8 AWG

Ratings - UL

UL Standard	UL 1059
B - UL Nominal Voltage U_N	600 V
B - UL Nominal Current I_N	35 A
B - UL Wire Min	24 AWG
B - UL Wire Max	8 AWG