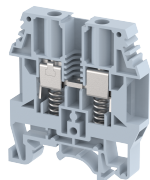


KULT6

Terminal Type - KULT6 , Spring loaded feed through terminal block, nominal voltage: 1000 V, nominal current: 41 A, Rated cross-section - 6.0 mm², connection method: Screw connection with spring support, number of connections: 2, cross-section: 0.5 mm² - 10 mm², AWG: 24 - 8 , mounting type: TS 35/7.5, TS 35/15 , TS 32



Approvals



General Information

| | |
|-----------------------------|---------------------------------------|
| Product Name | KULT6 |
| Connection Method | Screw Connection with spring support |
| Rating | 1000 V/41 A/6 mm ² /1.4 Nm |
| HSN Number | 8904476703460 |
| Standard Packing Qty(in No) | 100 |
| Country Of Origin | India |
| Screw thread | M3.5 |

Dimensions & Weight

| | | |
|-----------------------------|---------|-----------|
| Width | 8 mm | 0.31 inch |
| Length | 53 mm | 2.09 inch |
| Height | 58.6 mm | 2.31 inch |
| Weight of std. Packing Unit | 1.98 Kg | |

Material Data

| | |
|---------------------|--|
| Insulating Material | Polyamide 6,6 |
| Standard Colour | Gray |
| Colour Variants | Red , Yellow , Blue , Black , Green , Khakhi , |

Rated Conductor Size

| | |
|--------------------------------------|---------------------|
| Conductor cross section flexible min | 0.5 mm ² |
| Conductor cross section flexible max | 6 mm ² |
| Conductor cross section solid min | 0.5 mm ² |
| Conductor cross section solid max | 10 mm ² |

Ratings - IEC

| | |
|----------------------------------|-------------------|
| Connection in acc. with standard | IEC 60947-7-1 |
| Nominal Voltage U_n | 1000 V |
| Nominal Current I_n | 41 A |
| Nominal cross section | 6 mm ² |
| Short-time current | 0.72 kA |
| Rated surge voltage | 8 kV |
| Degree of pollution | 3 |

Ratings - ATEX

| | |
|-------------------------------|-------------------|
| ATEX Standard | EN 60079-7 |
| ATEX Nominal Voltage U_n | 750 V |
| ATEX Nominal Current I_n | 41 A |
| ATEX Cross Sec. Flexible Max. | 6 mm ² |

Ratings - CSA

| | |
|-------------------------------|------------------|
| CSA Standard | CSA C22.2 NO 158 |
| B - CSA Nominal Voltage U_N | 600 V |
| B - CSA Nominal Current I_N | 45 A |
| B - CSA Wire Min | 24 AWG |
| B - CSA Wire Max | 8 AWG |

Ratings - UL

| | |
|------------------------------|--------|
| UL Standard | UL1059 |
| B - UL Nominal Voltage U_N | 600 V |
| B - UL Nominal Current I_N | 45 A |
| B - UL Wire Min | 24 AWG |
| B - UL Wire Max | 8 AWG |