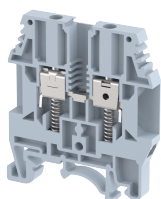


## KULT4

Terminal Type - KULT4 , Spring loaded Feed through terminal block, nominal voltage: 1000 V, nominal current: 32 A, Rated cross-section: 4.0 mm<sup>2</sup>, connection method: Screw connection with spring support, number of connections: 2, cross-section: 0.5 mm<sup>2</sup> - 6 mm<sup>2</sup>, AWG: 24 - 10 , mounting type: TS 35/7.5, TS 35/15 , TS 32



### Approvals



### General Information

Product Name	KULT4
Connection Method	Screw Connection with spring support
Rating	1000 V/32 A/4 mm <sup>2</sup> /0.5 Nm
HSN Number	8904476703453
Standard Packing Qty(in No)	100
Country Of Origin	India
Screw thread	M3

### Dimensions & Weight

Width	6 mm	0.24 inch
Length	53 mm	2.09 inch
Height	58.5 mm	2.3 inch
Weight of std. Packing Unit	1.49 Kg	

### Material Data

Insulating Material	Polyamide 6,6
Standard Colour	Gray
Colour Variants	Red , Yellow , Blue , Black , Green , Khakhi ,

### Rated Conductor Size

Conductor cross section flexible min	0.5 mm <sup>2</sup>
Conductor cross section flexible max	4 mm <sup>2</sup>
Conductor cross section solid min	0.5 mm <sup>2</sup>
Conductor cross section solid max	6 mm <sup>2</sup>

### Ratings - IEC

Connection in acc. with standard	IEC 60947-7-1
Nominal Voltage $U_n$	1000 V
Nominal Current $I_n$	32 A
Nominal cross section	4 mm <sup>2</sup>
Short-time current	0.48 kA
Rated surge voltage	8 kV
Degree of pollution	3

### Ratings - ATEX

ATEX Standard	EN-60079-7
ATEX Nominal Voltage $U_n$	750 V
ATEX Nominal Current $I_n$	32 A
ATEX Cross Sec. Flexible Max.	4 mm <sup>2</sup>

### Ratings - CSA

CSA Standard	CSA C22.2 NO 158
B - CSA Nominal Voltage $U_N$	600 V
B - CSA Nominal Current $I_N$	35 A
B - CSA Wire Min	24 AWG
B - CSA Wire Max	10 AWG

### Ratings - UL

UL Standard	UL 1059
B - UL Nominal Voltage $U_N$	600 V
B - UL Nominal Current $I_N$	35 A
B - UL Wire Min	24 AWG
B - UL Wire Max	10 AWG