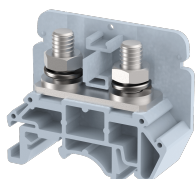


KBTM6

Terminal Type - KBTM6 , Feed Through Terminal Block , nominal voltage: 800 V, nominal current: 101 A, connection method: Bolt Connection - Nut driver operated , number of connections: 2, cross section: 6 mm² - 25 mm², Rated Cross-section : 25 mm² , AWG: 14 - 4, mounting type: TS 35/7.5, TS 35/15 , TS 32



Approvals



General Information

Product Name	KBTM6
Connection Method	Bolt Connection
Rating	800 V/101 A/25 mm ² /2.5 Nm
HSN Number	8904476704559
Standard Packing Qty(in No)	50
Country Of Origin	INDIA
Screw thread	M6

Dimensions & Weight

Width	17 mm	0.67 inch
Length	50 mm	1.97 inch
Height	41.4 mm	1.63 inch
Weight of std. Packing Unit	1.61 Kg	

Material Data

Insulating Material	Polyamide 6,6
Standard Colour	Gray
Colour Variants	Red , Yellow , Blue , Black , Green , Khakhi ,

Rated Conductor Size

Conductor cross section flexible min	6 mm ²
Conductor cross section flexible max	25 mm ²
Conductor cross section solid min	6 mm ²
Conductor cross section solid max	25 mm ²

Ratings - IEC

Connection in acc. with standard	IEC 60947-7-1
Nominal Voltage U_n	800 V
Nominal Current I_n	101 A
Nominal cross section	25 mm ²
Short-time current	3 kA
Rated surge voltage	8 kV
Degree of pollution	3

Ratings - ATEX

ATEX Standard	EN 60079-7
ATEX Nominal Voltage U_n	800 V
ATEX Nominal Current I_n	76 A
ATEX Cross Sec. Flexible Max.	25 mm ²

Ratings - CSA

CSA Standard	
B - CSA Nominal Voltage U_N	0 V
B - CSA Nominal Current I_N	0 A
B - CSA Wire Min	0 AWG
B - CSA Wire Max	0 AWG

Ratings - UL

UL Standard	UL 1059
B - UL Nominal Voltage U_N	600 V
B - UL Nominal Current I_N	85 A
B - UL Wire Min	14 AWG
B - UL Wire Max	4 AWG