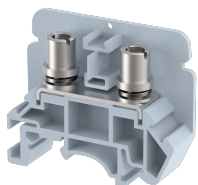


## KATM5

Terminal Type - KATM5, Feed Through Terminal Block, nominal voltage: 1000 V (Tested at 1100 V), nominal current: 76 A, connection method: Bolt Connection - Screwdriver operated , number of connections: 2, Rated cross-section: 16 mm<sup>2</sup>, cross-section: 0.5 mm<sup>2</sup> - 16 mm<sup>2</sup>, AWG: 14 - 6, mounting type: TS 35/7.5, TS 35/15, TS 32



### Approvals



### General Information

Product Name	KATM5
Connection Method	Bolt Connection
Rating	1000 V/76 A/16 mm <sup>2</sup> /2 Nm
HSN Number	NAV
Standard Packing Qty(in No)	50
Country Of Origin	INDIA
Screw thread	M5

### Dimensions & Weight

Width	13 mm	0.51 inch
Length	50 mm	1.97 inch
Height	41.4 mm	1.63 inch
Weight of std. Packing Unit	1.24 Kg	

### Material Data

Insulating Material	Polyamide 6,6
Standard Colour	Gray
Colour Variants	Red , Yellow , Blue , Black , Green , Khakhi ,

### Rated Conductor Size

Conductor cross section flexible min	0.5 mm <sup>2</sup>
Conductor cross section flexible max	16 mm <sup>2</sup>
Conductor cross section solid min	0.5 mm <sup>2</sup>
Conductor cross section solid max	16 mm <sup>2</sup>

### Ratings - IEC

Connection in acc. with standard	IEC 60947-7-1
Nominal Voltage $U_n$	1000 V
Nominal Current $I_n$	76 A
Nominal cross section	16 mm <sup>2</sup>
Short-time current	1.92 kA
Rated surge voltage	8 kV
Degree of pollution	3

### Ratings - ATEX

ATEX Standard	EN 60079-7
ATEX Nominal Voltage $U_n$	630 V
ATEX Nominal Current $I_n$	76 A
ATEX Cross Sec. Flexible Max.	16 mm <sup>2</sup>

### Ratings - CSA

CSA Standard	CSA C22.2 NO 158
B - CSA Nominal Voltage $U_N$	600 V
B - CSA Nominal Current $I_N$	65 A
B - CSA Wire Min	14 AWG
B - CSA Wire Max	6 AWG

### Ratings - UL

UL Standard	UL 1059
B - UL Nominal Voltage $U_N$	600 V
B - UL Nominal Current $I_N$	65 A
B - UL Wire Min	14 AWG
B - UL Wire Max	6 AWG