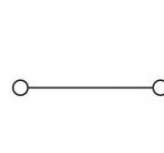
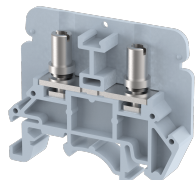


## KATM3

Terminal Type - KATM3 , Feed Through Terminal Block , nominal voltage: 800 V (Tested at 1100 V), nominal current: 41 A, connection method: Bolt Connection - Screw driver operated, number of connections: 2, Rated cross section: 6 mm<sup>2</sup>, cross section: 0.5 mm<sup>2</sup> - 6 mm<sup>2</sup>, AWG: 22 - 12, mounting type: TS 35/7.5, TS 35/15 , TS 32



### Approvals



### General Information

Product Name	KATM3
Connection Method	Bolt Connection
Rating	800 V/41 A/6 mm <sup>2</sup> /0.5 Nm
HSN Number	8904476704719
Standard Packing Qty(in No)	100
Country Of Origin	INDIA
Screw thread	M3

### Dimensions & Weight

Width	8.5 mm	0.33 inch
Length	50 mm	1.97 inch
Height	41.4 mm	1.63 inch
Weight of std. Packing Unit	1.43 Kg	

### Material Data

Insulating Material	Polyamide 6,6
Standard Colour	Gray
Colour Variants	Red , Yellow , Blue , Black , Green , Khakhi ,

### Rated Conductor Size

Conductor cross section flexible min	0.5 mm <sup>2</sup>
Conductor cross section flexible max	6 mm <sup>2</sup>
Conductor cross section solid min	0.5 mm <sup>2</sup>
Conductor cross section solid max	6 mm <sup>2</sup>

### Ratings - IEC

Connection in acc. with standard	IEC 60947-7-1
Nominal Voltage $U_n$	800 V
Nominal Current $I_n$	41 A
Nominal cross section	6 mm <sup>2</sup>
Short-time current	0.72 kA
Rated surge voltage	8 kV
Degree of pollution	3

### Ratings - ATEX

ATEX Standard	EN 60079-7
ATEX Nominal Voltage $U_n$	630 V
ATEX Nominal Current $I_n$	20 A
ATEX Cross Sec. Flexible Max.	2.5 mm <sup>2</sup>

### Ratings - CSA

CSA Standard	
B - CSA Nominal Voltage $U_N$	0 V
B - CSA Nominal Current $I_N$	0 A
B - CSA Wire Min	0 AWG
B - CSA Wire Max	0 AWG

### Ratings - UL

UL Standard	UL 1059
B - UL Nominal Voltage $U_N$	600 V
B - UL Nominal Current $I_N$	25 A
B - UL Wire Min	22 AWG
B - UL Wire Max	12 AWG