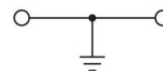
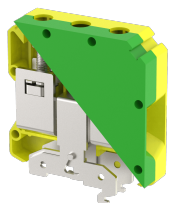


ET50

Terminal Type - ET50 , Ground modular terminal block , connection method: Screw connection, number of connections: 2, Rated cross-section: 50 mm², cross-section: 10 mm² - 50 mm², mounting type: TS 35/7.5, TS 35/15 , TS 32



Approvals



General Information

Product Name	ET50
Connection Method	Screw Connection
Rating	NAP V/NAP A/50 mm ² /8 Nm
HSN Number	8904476704313
Standard Packing Qty(in No)	10
Country Of Origin	India
Screw thread	M6

Dimensions & Weight

Width	20.5 mm	0.81 inch
Length	71 mm	2.8 inch
Height	75.8 mm	2.98 inch
Weight of std. Packing Unit	2.36 Kg	

Material Data

Insulating Material	Polyamide 6,6
Standard Colour	Green-Yellow
Colour Variants	

Rated Conductor Size

Conductor cross section flexible min	16 mm ²
Conductor cross section flexible max	50 mm ²
Conductor cross section solid min	16 mm ²
Conductor cross section solid max	50 mm ²

Ratings - IEC

Connection in acc. with standard	IEC 60947-7-2
Nominal Voltage U_n	NAP V
Nominal Current I_n	NAP A
Nominal cross section	50 mm ²
Short-time current	6 kA
Rated surge voltage	NAP kV
Degree of pollution	3

Ratings - ATEX

ATEX Standard	
ATEX Nominal Voltage U_n	0 V
ATEX Nominal Current I_n	0 A
ATEX Cross Sec. Flexible Max.	50 mm ²

Ratings - CSA

CSA Standard	
B - CSA Nominal Voltage U_N	0 V
B - CSA Nominal Current I_N	0 A
B - CSA Wire Min	0 AWG
B - CSA Wire Max	0 AWG

Ratings - UL

UL Standard	
B - UL Nominal Voltage U_N	0 V
B - UL Nominal Current I_N	0 A
B - UL Wire Min	0 AWG
B - UL Wire Max	0 AWG