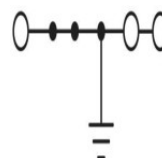
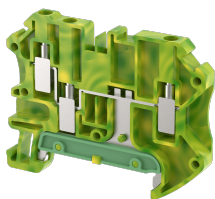


## TGQ2.5-1X2

Terminal Type - TGQ2.5-1X2, Ground modular terminal block, connection method: Screw connection, number of connections: 3, Rated cross-section - 2.5 mm<sup>2</sup>, cross-section: 0.14 mm<sup>2</sup> - 4 mm<sup>2</sup>, AWG: 24-12, mounting type: TS 35/7.5, TS 35/15



### Approvals



### General Information

Product Name	TGQ2.5-1X2
Connection Method	Screw Connection
Rating	2.5 mm <sup>2</sup> / 0.5 Nm
HSN Number	8904476701657
Standard Packing Qty (in No)	100
Country Of Origin	India
Screw thread	M3

### Dimensions & Weight

Width	5 mm	0.2 inch
Length	61.19 mm	2.41 inch
Height	46.2 mm	1.82 inch
Weight of std. Packing Unit	1.45 Kg	

### Material Data

Insulating Material	Polyamide 6,6
Standard Colour	Green-Yellow
Colour Variants	-

### Rated Conductor Size

Conductor cross section flexible min	0.14 mm <sup>2</sup>
Conductor cross section flexible max	2.5 mm <sup>2</sup>
Conductor cross section solid min	0.14 mm <sup>2</sup>
Conductor cross section solid max	4 mm <sup>2</sup>

### Rated Conductor Size

Conductor cross section flexible min	0.14 mm <sup>2</sup>
Conductor cross section flexible max	2.5 mm <sup>2</sup>
Conductor cross section solid min	0.14 mm <sup>2</sup>

Conductor cross section solid max	4 mm <sup>2</sup>
-----------------------------------	-------------------

### Ratings - ATEX

ATEX Standard	EN 60079-7
ATEX Nominal Voltage U <sub>n</sub>	V
ATEX Nominal Current I <sub>n</sub>	A
ATEX Cross Sec. Flexible Max.	2.5 mm <sup>2</sup>

### Ratings - UL

UL Standard	UL 1059
B - UL Nominal Voltage U <sub>N</sub>	V
B - UL Nominal Current I <sub>N</sub>	A
B - UL Wire Min	24 AWG
B - UL Wire Max	12 AWG

### Product Accessories

Cover Profile		
PCPDBF-3	Height : 14.10 mm Thickness : 1.50 mm Length : 79.00 mm	
DIN Rail Perforated		
CHKDS	Height : 15.00 mm Width : 35.00 mm Thickness : 1.50 mm Length : 2,000.00 mm	
CHKS	Height : 7.50 mm Width : 35.00 mm Thickness : 1.00 mm	
DIN Rail, Unperforated		
CHKD	Height : 15.00 mm Width : 35.00 mm Thickness : 1.50 mm	
CHK	Height : 7.50 mm Width : 35.00 mm Thickness : 1.00 mm	
End Cap		
CHKENDCAP	Height : 14.00 mm Width : 9.00 mm Length : 41.50 mm	

<b>End Clamp</b>		
SCUP	Height : 34.00 mm Width : 9.00 mm Length : 44.75 mm	
SCEC35	Height : 31.50 mm Width : 8.00 mm Length : 45.80 mm	
SCUSL	Height : 41.10 mm Width : 8.00 mm Length : 47.50 mm	
SCUDD	Height : 50.00 mm Width : 10.00 mm Length : 55.60 mm	
DCKN	Height : 33.00 mm Width : 6.00 mm Length : 43.50 mm	
DCKN10	Height : 35.00 mm Width : 10.00 mm Length : 43.50 mm	
SCKN	Height : 34.50 mm Width : 8.00 mm Length : 44.90 mm	
SCUN	Height : 35.50 mm Width : 9.50 mm Length : 50.60 mm	
<b>End Cover</b>		
CTP2.5-1X2	Height : 35.40 mm Width : 2.00 mm Length : 60.50 mm	
<b>Marker For Terminal Blocks</b>		
LABEL KN5	Height : 2.42 mm Width : 5.00 mm Length : 7.50 mm	

<b>Partition Plate</b>		
DBF-3	Height : 50.00 mm Width : 3.00 mm Length : 78.00 mm	
<b>Plug-in Bridge/Jumper</b>		
SLPU5-2W	Height : 26.00 mm Width : 3.00 mm Pitch : 5.00 mm Length : 9.15 mm	
SLPU5-3W	Height : 26.00 mm Width : 3.00 mm Pitch : 5.00 mm Length : 14.15 mm	
SLPU5-10W	Height : 26.00 mm Width : 3.00 mm Pitch : 5.00 mm Length : 49.15 mm	
SLPU5-4W	Height : 26.00 mm Width : 3.00 mm Pitch : 5.00 mm Length : 19.15 mm	
SLPU5-5W	Height : 26.00 mm Width : 3.00 mm Pitch : 5.00 mm Length : 24.15 mm	
SLPU5-6W	Height : 26.00 mm Width : 3.00 mm Pitch : 5.00 mm Length : 29.15 mm	
SLPU5-7W	Height : 26.00 mm Width : 3.00 mm Pitch : 5.00 mm Length : 34.15 mm	
<b>Marker carriers</b>		
SCUDDMLH	Height : 71.50 mm Width : 11.00 mm Length : 55.60 mm	
SCUNMLH	Height : 53.50 mm Width : 11.00 mm Length : 50.60 mm	
DCKNMLH	Height : 45.00 mm Width : 10.00 mm Length : 43.50 mm	

**Marker carriers**

SCKNMLH	Height : 42.00 mm Width : 16.00 mm Length : 44.70 mm	
---------	--	---

