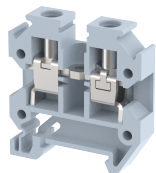


## SUT4

Terminal Type - SUT4, Mini and Micro feed through terminal block, nominal voltage: 500 V, nominal current: 32 A, Rated cross-section - 4 mm<sup>2</sup>, connection method: Screw connection, number of connections: 2, cross-section: 0.5 mm<sup>2</sup> - 4 mm<sup>2</sup>, AWG: 24 - 12, mounting type: TS15



### Approvals



### General Information

Product Name	SUT4
Connection Method	Screw Connection
Rating	500 V / 32 A / 4 mm <sup>2</sup> / 0.5 Nm
HSN Number	8904476704054
Standard Packing Qty (in No)	100
Country Of Origin	India
Screw thread	M3

### Dimensions & Weight

Width	6 mm	0.24 inch
Length	28.5 mm	1.12 inch
Height	29.7 mm	1.17 inch
Weight of std. Packing Unit	0.62 Kg	

### Material Data

Insulating Material	Polyamide 6,6
Standard Colour	Gray
Colour Variants	Red, Yellow, Blue, Black, Green, Khakhi

### Rated Conductor Size

Conductor cross section flexible min	0.5 mm <sup>2</sup>
Conductor cross section flexible max	4 mm <sup>2</sup>
Conductor cross section solid min	0.5 mm <sup>2</sup>
Conductor cross section solid max	4 mm <sup>2</sup>

### Rated Conductor Size

Conductor cross section flexible min	0.5 mm <sup>2</sup>
Conductor cross section flexible max	4 mm <sup>2</sup>

Conductor cross section solid min	0.5 mm <sup>2</sup>
Conductor cross section solid max	4 mm <sup>2</sup>

### Ratings - ATEX

ATEX Standard	EN 60079-7
ATEX Nominal Voltage U <sub>n</sub>	320 V
ATEX Nominal Current I <sub>n</sub>	24 A
ATEX Cross Sec. Flexible Max.	2.5 mm <sup>2</sup>

### Ratings - CSA

CSA Standard	CSA C22.2 NO 158
B - CSA Nominal Voltage U <sub>N</sub>	300 V
B - CSA Nominal Current I <sub>N</sub>	20 A
B - CSA Wire Min	24 AWG
B - CSA Wire Max	12 AWG

### Ratings - UL

UL Standard	UL 1059
B - UL Nominal Voltage U <sub>N</sub>	300 V
B - UL Nominal Current I <sub>N</sub>	22 A
B - UL Wire Min	24 AWG
B - UL Wire Max	12 AWG

### Product Accessories

DIN Rail Perforated		
CHM	Height : 5.00 mm Width : 15.00 mm Thickness : 1.00 mm	
End Clamp		
SCMN	Height : 18.00 mm Width : 6.10 mm Length : 23.50 mm	
End Cover		
ES4	Height : 25.70 mm Width : 1.50 mm Length : 28.50 mm	

<b>Fixed Bridge</b>		
CCLADD-2W	Height : 14.00 mm Pitch : 6.00 mm Length : 11.00 mm	
CCLADD-10W	Height : 14.00 mm Pitch : 6.00 mm Length : 59.00 mm	
CCLADD-3W	Height : 14.00 mm Pitch : 6.00 mm Length : 17.00 mm	
CCLADD-4W	Height : 14.00 mm Pitch : 6.00 mm Length : 23.00 mm	
CCLADD-5W	Height : 14.00 mm Pitch : 6.00 mm Length : 29.00 mm	
<b>Insertion Bridge</b>		
SLC4N-10W	Height : 23.00 mm Width : 3.00 mm Pitch : 6.00 mm Length : 58.60 mm	
SLC4N-3W	Height : 23.00 mm Width : 3.00 mm Pitch : 6.00 mm Length : 16.65 mm	
SLC4N-4W	Height : 23.00 mm Width : 3.00 mm Pitch : 6.00 mm Length : 22.65 mm	
SLC4N-5W	Height : 23.00 mm Width : 3.00 mm Pitch : 6.00 mm Length : 28.65 mm	
SLC4N-2W	Height : 23.00 mm Width : 3.00 mm Pitch : 6.00 mm Length : 10.91 mm	
<b>Marker For Terminal Blocks</b>		
LABEL KN5.5	Height : 2.42 mm Width : 6.00 mm Length : 7.50 mm	

Partition Plate		
MBX	Height : 36.70 mm Width : 1.50 mm Length : 43.50 mm	

