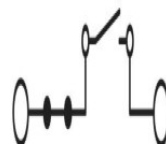
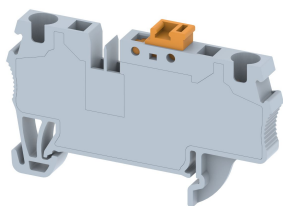


SQK4

Terminal Type - SQK4, Disconnecting terminal block, nominal voltage: 1000 V, nominal current: 22 A, Rated cross-section: 4.0 mm², connection method: Spring clamp connection, number of connections: 2, cross-section: 0.08 mm² - 6 mm², AWG: 24-10 , mounting type: TS 35/7.5, TS 35/15



Approvals



General Information

Product Name	SQK4
Connection Method	Spring Cage Connection
Rating	1000 V / 22 A / 4 mm ²
HSN Number	8904476701244
Standard Packing Qty (in No)	100
Country Of Origin	India
Screw thread	-

Dimensions & Weight

Width	6 mm	0.24 inch
Length	62.4 mm	2.46 inch
Height	40 mm	1.57 inch
Weight of std. Packing Unit	1.23 Kg	

Material Data

Insulating Material	Polyamide 6,6
Standard Colour	Gray
Colour Variants	Red, Yellow, Blue, Black, Green, Khakhi

Rated Conductor Size

Conductor cross section flexible min	0.08 mm ²
Conductor cross section flexible max	4 mm ²
Conductor cross section solid min	0.08 mm ²
Conductor cross section solid max	6 mm ²

Rated Conductor Size

Conductor cross section flexible min	0.08 mm ²
Conductor cross section flexible max	4 mm ²

Conductor cross section solid min	0.08 mm ²
Conductor cross section solid max	6 mm ²


Ratings - ATEX

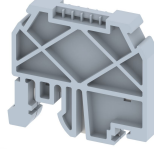
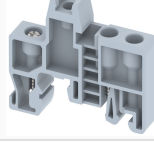
ATEX Standard	EN 60049-7
ATEX Nominal Voltage U _n	630 V
ATEX Nominal Current I _n	15 A
ATEX Cross Sec. Flexible Max.	4 mm ²

Ratings - UL

UL Standard	UL 1059
B - UL Nominal Voltage U _N	600 V
B - UL Nominal Current I _N	22 A
B - UL Wire Min	24 AWG
B - UL Wire Max	10 AWG

Product Accessories

Cover Profile		
PCPDBF-1	Height : 13.90 mm Thickness : 1.50 mm Length : 66.00 mm	
DIN Rail Perforated		
CHKDS	Height : 15.00 mm Width : 35.00 mm Thickness : 1.50 mm Length : 2,000.00 mm	
CHKS	Height : 7.50 mm Width : 35.00 mm Thickness : 1.00 mm	
DIN Rail, Unperforated		
CHKD	Height : 15.00 mm Width : 35.00 mm Thickness : 1.50 mm	
CHK	Height : 7.50 mm Width : 35.00 mm Thickness : 1.00 mm	

End Cap		
CHKENDCAP	Height : 14.00 mm Width : 9.00 mm Length : 41.50 mm	
End Clamp		
SCUP	Height : 34.00 mm Width : 9.00 mm Length : 44.75 mm	
SCEC35	Height : 31.50 mm Width : 8.00 mm Length : 45.80 mm	
SCUSL	Height : 41.10 mm Width : 8.00 mm Length : 47.50 mm	
SCUDD	Height : 50.00 mm Width : 10.00 mm Length : 55.60 mm	
DCKN	Height : 33.00 mm Width : 6.00 mm Length : 43.50 mm	
DCKN10	Height : 35.00 mm Width : 10.00 mm Length : 43.50 mm	
SCKN	Height : 34.50 mm Width : 8.00 mm Length : 44.90 mm	
SCUN	Height : 35.50 mm Width : 9.50 mm Length : 50.60 mm	
Marker For Terminal Blocks		
LABEL KN5.5	Height : 2.42 mm Width : 6.00 mm Length : 7.50 mm	

Partition Plate		
DBF-1	Height : 42.00 mm Width : 3.00 mm Length : 60.00 mm	
Plug-in Bridge/Jumper		
SLPU6-2W	Height : 26.00 mm Width : 3.00 mm Pitch : 6.00 mm Length : 10.15 mm	
SLPU6-10W	Height : 26.00 mm Width : 3.00 mm Pitch : 6.00 mm Length : 58.15 mm	
SLPU6-3W	Height : 26.00 mm Width : 3.00 mm Pitch : 6.00 mm Length : 16.15 mm	
SLPU6-4W	Height : 26.00 mm Width : 3.00 mm Pitch : 6.00 mm Length : 22.15 mm	
SLPU6-5W	Height : 26.00 mm Width : 3.00 mm Pitch : 6.00 mm Length : 28.15 mm	
SLPU6-6W	Height : 26.00 mm Width : 3.00 mm Pitch : 6.00 mm Length : 34.15 mm	
Marker carriers		
SCUDDMLH	Height : 71.50 mm Width : 11.00 mm Length : 55.60 mm	
SCUNMLH	Height : 53.50 mm Width : 11.00 mm Length : 50.60 mm	
DCKNMLH	Height : 45.00 mm Width : 10.00 mm Length : 43.50 mm	
SCKNMLH	Height : 42.00 mm Width : 16.00 mm Length : 44.70 mm	