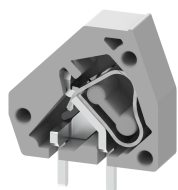


SQECDWP

Terminal Type - SQECDWP , PCB Connector Without Stacking pins , nominal voltage: 250 V, nominal current: 15 A, connection method: Spring Cage connection, number of connections: 2 , Rated cross-section : 2.5 mm² , cross-section: 0.5 mm² - 2.5 mm², AWG: 24 - 12, mounting type - Printed circuit board (PCB)



Approvals



General Information

Product Name	SQECDWP
Connection Method	Spring Cage Connection
Rating	250 V / 15 A / 2.5 mm ² / Nm
HSN Number	85389000
Standard Packing Qty (in No)	100
Country Of Origin	India
Screw thread	NA

Dimensions & Weight

Width	5.08 mm	0.2 inch
Length	15.4 mm	0.61 inch
Height	14.2 mm	0.56 inch
Weight of std. Packing Unit	0.21 Kg	

Material Data

Insulating Material	Polyamide 6,6
Standard Colour	Gray
Colour Variants	-

Rated Conductor Size

Conductor cross section flexible min	0.5 mm ²
Conductor cross section flexible max	2.5 mm ²
Conductor cross section solid min	0.5 mm ²
Conductor cross section solid max	2.5 mm ²

Rated Conductor Size

Conductor cross section flexible min	0.5 mm ²
Conductor cross section flexible max	2.5 mm ²

Datasheet

Conductor cross section solid min	0.5 mm ²
Conductor cross section solid max	2.5 mm ²

Product Accessories

End Cover		
SQECDP	Height : 14.20 mm Width : 1.00 mm Length : 15.40 mm	

