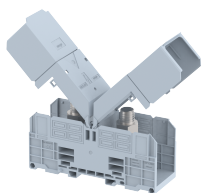


SPT300

Terminal Type - SPT300, High current connectors with secured hinged cover, nominal voltage: 1000 V AC/1500 V DC, Rated cross-section - 300 mm², nominal current: 520 A, connection method: Bolt connection, number of connections: 2, cross-section: 35 mm² - 300 mm², 4 AWG - 750 KCMIL, mounting type: TS 35/7.5, TS 35/15



Approvals



General Information

Product Name	SPT300
Connection Method	Bolt Connection
Rating	1000 V / 520 A / 300 mm ² / 25 Nm
HSN Number	8904476702654
Standard Packing Qty (in No)	5
Country Of Origin	India
Screw thread	M16

Dimensions & Weight

Width	55 mm	2.17 inch
Length	286.8 mm	11.29 inch
Height	89.3 mm	3.52 inch
Weight of std. Packing Unit	3.51 Kg	

Material Data

Insulating Material	Polyamide 6,6
Standard Colour	Gray
Colour Variants	Red, Yellow, Blue, Black, Green, Khakhi

Rated Conductor Size

Conductor cross section flexible min	35 mm ²
Conductor cross section flexible max	300 mm ²
Conductor cross section solid min	35 mm ²
Conductor cross section solid max	300 mm ²

Rated Conductor Size

Conductor cross section flexible min	35 mm ²
Conductor cross section flexible max	300 mm ²

Conductor cross section solid min	35 mm ²
Conductor cross section solid max	300 mm ²

Ratings - ATEX

ATEX Standard	EN 60079-7
ATEX Nominal Voltage U _n	1000 V
ATEX Nominal Current I _n	520 A
ATEX Cross Sec. Flexible Max.	300 mm ²

Ratings - UL

UL Standard	UL 1059
B - UL Nominal Voltage U _N	1000 V
B - UL Nominal Current I _N	475 A
B - UL Wire Min	4 AWG
B - UL Wire Max	750 KCMIL

Product Accessories

DIN Rail Perforated

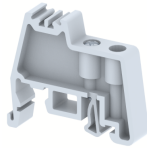
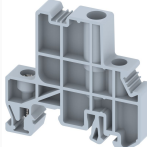
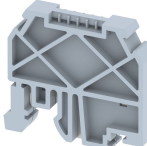
CHKDS	Height : 15.00 mm Width : 35.00 mm Thickness : 1.50 mm Length : 2,000.00 mm	
CHKS	Height : 7.50 mm Width : 35.00 mm Thickness : 1.00 mm	

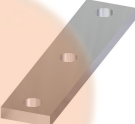
DIN Rail, Unperforated

CHKD	Height : 15.00 mm Width : 35.00 mm Thickness : 1.50 mm	
CHK	Height : 7.50 mm Width : 35.00 mm Thickness : 1.00 mm	


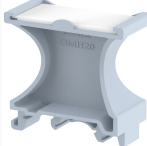
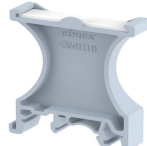
End Cap

CHKENDCAP	Height : 14.00 mm Width : 9.00 mm Length : 41.50 mm	
-----------	---	---

End Clamp		
SCUP	Height : 34.00 mm Width : 9.00 mm Length : 44.75 mm	
SCUDD	Height : 50.00 mm Width : 10.00 mm Length : 55.60 mm	
SCUSL	Height : 41.10 mm Width : 8.00 mm Length : 47.50 mm	

Fixed Bridge		
CCLASPT300-2W	Width : 35.00 mm Thickness : 3.20 mm Pitch : 55.00 mm Length : 95.00 mm	
CCLASPT300-3W	Width : 35.00 mm Thickness : 3.20 mm Pitch : 55.00 mm Length : 150.00 mm	

Marker For Terminal Blocks		
LABEL KN12	Height : 2.43 mm Width : 12.00 mm Length : 8.50 mm	

Marker carriers		
SCUDDMLH	Height : 71.50 mm Width : 11.00 mm Length : 55.60 mm	
GMH20	Height : 51.00 mm Width : 20.00 mm Length : 42.25 mm	
GMH10	Height : 51.00 mm Width : 10.00 mm Length : 42.25 mm	
SCKNMLH	Height : 42.00 mm Width : 16.00 mm Length : 44.70 mm	