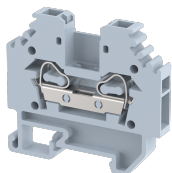


SCT2.5MC

Terminal Type - SCT2.5MC, Mini and Micro terminal block, nominal voltage: 800 V, nominal current: 24 A, Rated cross-section: 2.5 mm², connection method: Spring Cage connection, number of connections: 2, cross-section: 0.5 mm² - 2.5 mm², mounting type: TS15



Approvals



General Information

Product Name	SCT2.5MC
Connection Method	Spring Cage Connection
Rating	800 V / 24 A / 2.5 mm ²
HSN Number	NAV
Standard Packing Qty (in No)	100
Country Of Origin	India
Screw thread	NA

Dimensions & Weight

Width	5 mm	0.2 inch
Length	38 mm	1.5 inch
Height	34 mm	1.34 inch
Weight of std. Packing Unit	0.5 Kg	

Material Data

Insulating Material	Polyamide 6,6
Standard Colour	Gray
Colour Variants	Red, Yellow, Blue, Black, Green, Khakhi

Rated Conductor Size

Conductor cross section flexible min	0.5 mm ²
Conductor cross section flexible max	2.5 mm ²
Conductor cross section solid min	0.5 mm ²
Conductor cross section solid max	2.5 mm ²

Rated Conductor Size

Conductor cross section flexible min	0.5 mm ²
Conductor cross section flexible max	2.5 mm ²

Conductor cross section solid min	0.5 mm ²
Conductor cross section solid max	2.5 mm ²

Ratings - ATEX

ATEX Standard	EN 60079-7
ATEX Nominal Voltage U _n	800 V
ATEX Nominal Current I _n	21 A
ATEX Cross Sec. Flexible Max.	2.5 mm ²

Ratings - UL

UL Standard	
B - UL Nominal Voltage U _N	V
B - UL Nominal Current I _N	A
B - UL Wire Min	AWG
B - UL Wire Max	AWG

Product Accessories

DIN Rail Perforated		
CHM	Height : 5.00 mm Width : 15.00 mm Thickness : 1.00 mm	
End Clamp		
SCMN	Height : 18.00 mm Width : 6.10 mm Length : 23.50 mm	
End Cover		
SEP2.5	Height : 30.50 mm Width : 1.50 mm Length : 38.00 mm	
Marker For Terminal Blocks		
LABEL KN5	Height : 2.42 mm Width : 5.00 mm Length : 7.50 mm	
Partition Plate		
MBX	Height : 36.70 mm Width : 1.50 mm Length : 43.50 mm	

Plug-in Bridge/Jumper		
SSL2.5	Height : 22.80 mm Width : 4.85 mm Pitch : 3.20 mm Length : 8.40 mm	

