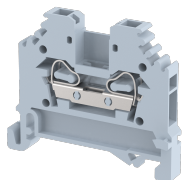


SCT2.5

Terminal Type - SCT2.5, Feed-through terminal block, nominal voltage: 800 V, nominal current: 24 A, Rated cross-section - 2.5 mm², connection method: Spring Cage connection with side wire entry, number of connections: 2, cross-section: 0.5 mm² - 2.5 mm², AWG: 22 - 14, mounting type: TS 35/7.5, TS 35/15



Approvals



General Information

Product Name	SCT2.5
Connection Method	Spring Cage Connection
Rating	800 V / 24 A / 2.5 mm ²
HSN Number	85389000
Standard Packing Qty (in No)	100
Country Of Origin	INDIA
Screw thread	NA

Dimensions & Weight

Width	5 mm	0.2 inch
Length	42.5 mm	1.67 inch
Height	35 mm	1.38 inch
Weight of std. Packing Unit	0.5 Kg	

Material Data

Insulating Material	Polyamide 6,6
Standard Colour	Gray
Colour Variants	Red, Yellow, Blue, Black, Green, Khakhi

Rated Conductor Size

Conductor cross section flexible min	0.5 mm ²
Conductor cross section flexible max	2.5 mm ²
Conductor cross section solid min	0.5 mm ²
Conductor cross section solid max	2.5 mm ²

Rated Conductor Size

Conductor cross section flexible min	0.5 mm ²
Conductor cross section flexible max	2.5 mm ²

Conductor cross section solid min	0.5 mm ²
Conductor cross section solid max	2.5 mm ²


Ratings - ATEX

ATEX Standard	EN 60079-7
ATEX Nominal Voltage U _n	630 V
ATEX Nominal Current I _n	20 A
ATEX Cross Sec. Flexible Max.	2.5 mm ²

Ratings - UL

UL Standard	UL 1059
B - UL Nominal Voltage U _N	600 V
B - UL Nominal Current I _N	15 A
B - UL Wire Min	22 AWG
B - UL Wire Max	14 AWG

Product Accessories

Cover Profile		
PCPDBF-1	Height : 13.90 mm Thickness : 1.50 mm Length : 66.00 mm	
DIN Rail Perforated		
CHKDS	Height : 15.00 mm Width : 35.00 mm Thickness : 1.50 mm Length : 2,000.00 mm	
CHKS	Height : 7.50 mm Width : 35.00 mm Thickness : 1.00 mm	
DIN Rail, Unperforated		
CHKD	Height : 15.00 mm Width : 35.00 mm Thickness : 1.50 mm	
CHK	Height : 7.50 mm Width : 35.00 mm Thickness : 1.00 mm	

End Clamp		
SCUP	Height : 34.00 mm Width : 9.00 mm Length : 44.75 mm	
SCEC35	Height : 31.50 mm Width : 8.00 mm Length : 45.80 mm	
SCUSL	Height : 41.10 mm Width : 8.00 mm Length : 47.50 mm	
SCUDD	Height : 50.00 mm Width : 10.00 mm Length : 55.60 mm	
DCKN	Height : 33.00 mm Width : 6.00 mm Length : 43.50 mm	
DCKN10	Height : 35.00 mm Width : 10.00 mm Length : 43.50 mm	
SCKN	Height : 34.50 mm Width : 8.00 mm Length : 44.90 mm	
SCUN	Height : 35.50 mm Width : 9.50 mm Length : 50.60 mm	
End Cover		
SEP2.5	Height : 30.50 mm Width : 1.50 mm Length : 38.00 mm	
Marker For Terminal Blocks		
LABEL KN5	Height : 2.42 mm Width : 5.00 mm Length : 7.50 mm	

Partition Plate		
DBF-1	Height : 42.00 mm Width : 3.00 mm Length : 60.00 mm	
KBXF	Height : 53.40 mm Width : 1.50 mm Length : 54.00 mm	
Plug-in Bridge/Jumper		
SSL2.5	Height : 22.80 mm Width : 4.85 mm Pitch : 3.20 mm Length : 8.40 mm	
Marker carriers		
SCUDDMLH	Height : 71.50 mm Width : 11.00 mm Length : 55.60 mm	
SCUNMLH	Height : 53.50 mm Width : 11.00 mm Length : 50.60 mm	
DCKNMLH	Height : 45.00 mm Width : 10.00 mm Length : 43.50 mm	
SCKNMLH	Height : 42.00 mm Width : 16.00 mm Length : 44.70 mm	