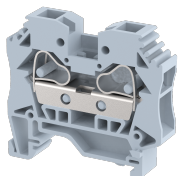


SCT10

Terminal Type - SCT10, Feed Through terminal block, nominal voltage: 800 V, nominal current: 57 A, Rated cross-section - 10 mm², connection method: Spring Cage connection with side wire entry, number of connections: 2, cross-section: 0.5 mm² - 10 mm², mounting type: TS 35/7.5, TS 35/15



Approvals



General Information

Product Name	SCT10
Connection Method	Spring Cage Connection
Rating	800 V / 57 A / 10 mm ²
HSN Number	85389000
Standard Packing Qty (in No)	100
Country Of Origin	India
Screw thread	NA

Dimensions & Weight

Width	10 mm	0.39 inch
Length	52 mm	2.05 inch
Height	46.5 mm	1.83 inch
Weight of std. Packing Unit	1.93 Kg	

Material Data

Insulating Material	Polyamide 6,6
Standard Colour	Gray
Colour Variants	Red, Yellow, Blue, Black, Green, Khakhi

Rated Conductor Size

Conductor cross section flexible min	0.5 mm ²
Conductor cross section flexible max	10 mm ²
Conductor cross section solid min	0.5 mm ²
Conductor cross section solid max	10 mm ²

Rated Conductor Size

Conductor cross section flexible min	0.5 mm ²
Conductor cross section flexible max	10 mm ²

Conductor cross section solid min	0.5 mm ²
Conductor cross section solid max	10 mm ²

Ratings - CSA

CSA Standard	CSA C22.2 NO 158
B - CSA Nominal Voltage U _N	600 V
B - CSA Nominal Current I _N	50 A
B - CSA Wire Min	16 AWG
B - CSA Wire Max	8 AWG



Ratings - UL

UL Standard	
B - UL Nominal Voltage U _N	0 V
B - UL Nominal Current I _N	0 A
B - UL Wire Min	AWG
B - UL Wire Max	AWG

Product Accessories

Cover Profile		
PCPDBF-3	Height : 14.10 mm Thickness : 1.50 mm Length : 79.00 mm	

DIN Rail Perforated		
CHKDS	Height : 15.00 mm Width : 35.00 mm Thickness : 1.50 mm Length : 2,000.00 mm	
CHKS	Height : 7.50 mm Width : 35.00 mm Thickness : 1.00 mm	

DIN Rail, Unperforated		
CHKD	Height : 15.00 mm Width : 35.00 mm Thickness : 1.50 mm	
CHK	Height : 7.50 mm Width : 35.00 mm Thickness : 1.00 mm	

End Clamp		
SCUP	Height : 34.00 mm Width : 9.00 mm Length : 44.75 mm	
SCEC35	Height : 31.50 mm Width : 8.00 mm Length : 45.80 mm	
SCUSL	Height : 41.10 mm Width : 8.00 mm Length : 47.50 mm	
SCUDD	Height : 50.00 mm Width : 10.00 mm Length : 55.60 mm	
DCKN	Height : 33.00 mm Width : 6.00 mm Length : 43.50 mm	
DCKN10	Height : 35.00 mm Width : 10.00 mm Length : 43.50 mm	
SCKN	Height : 34.50 mm Width : 8.00 mm Length : 44.90 mm	
SCUN	Height : 35.50 mm Width : 9.50 mm Length : 50.60 mm	
End Cover		
SEP10	Height : 35.00 mm Width : 1.50 mm Length : 52.00 mm	
Marker For Terminal Blocks		
LABEL KN10	Height : 2.89 mm Width : 10.00 mm Length : 8.50 mm	

Partition Plate		
DBF-3	Height : 50.00 mm Width : 3.00 mm Length : 78.00 mm	
Plug-in Bridge/Jumper		
SSL10	Height : 25.60 mm Width : 9.40 mm Pitch : 5.95 mm Length : 9.00 mm	
Marker carriers		
SCUDDMLH	Height : 71.50 mm Width : 11.00 mm Length : 55.60 mm	
SCUNMLH	Height : 53.50 mm Width : 11.00 mm Length : 50.60 mm	
DCKNMLH	Height : 45.00 mm Width : 10.00 mm Length : 43.50 mm	
SCKNMLH	Height : 42.00 mm Width : 16.00 mm Length : 44.70 mm	