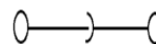
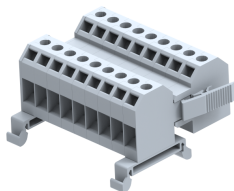


## PS8M-9W

Terminal Type - PS8M - 9W , Plug & socket type terminal block , Plug & socket type terminal block , nominal voltage: 800 V , nominal current: 32 A, connection method: Screw clamp connection , number of connections: 18 , Rated cross section: 6 mm<sup>2</sup>, cross section: 0.5 mm<sup>2</sup> - 6 mm<sup>2</sup>, mounting type: TS35/7.5 , TS35/15



### Approvals



### General Information

Product Name	PS8M-9W
Connection Method	Screw Connection
Rating	800 V / 32 A / 6 mm <sup>2</sup> / 0.8 Nm
HSN Number	85389000
Standard Packing Qty (in No)	10
Country Of Origin	India
Screw thread	M3.5

### Dimensions & Weight

Width	69.42 mm	2.73 inch
Length	73.85 mm	2.91 inch
Height	44 mm	1.73 inch
Weight of std. Packing Unit	1.42 Kg	

### Material Data

Insulating Material	Polyamide 6,6
Standard Colour	Gray
Colour Variants	Red, Yellow, Blue, Black, Green, Khakhi

### Rated Conductor Size

Conductor cross section flexible min	0.5 mm <sup>2</sup>
Conductor cross section flexible max	6 mm <sup>2</sup>
Conductor cross section solid min	0.5 mm <sup>2</sup>
Conductor cross section solid max	6 mm <sup>2</sup>

### Rated Conductor Size

Conductor cross section flexible min	0.5 mm <sup>2</sup>
Conductor cross section flexible max	6 mm <sup>2</sup>


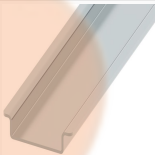
Conductor cross section solid min	0.5 mm <sup>2</sup>
Conductor cross section solid max	6 mm <sup>2</sup>

**Product Accessories**

**DIN Rail Perforated**

CHKDS	Height : 15.00 mm Width : 35.00 mm Thickness : 1.50 mm Length : 2,000.00 mm	
CHKS	Height : 7.50 mm Width : 35.00 mm Thickness : 1.00 mm	

**DIN Rail, Unperforated**


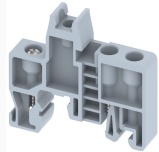
CHKD	Height : 15.00 mm Width : 35.00 mm Thickness : 1.50 mm	
CHK	Height : 7.50 mm Width : 35.00 mm Thickness : 1.00 mm	


**End Cap**

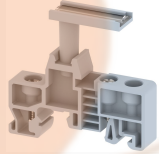
CHKENDCAP	Height : 14.00 mm Width : 9.00 mm Length : 41.50 mm	
-----------	---	---

**End Clamp**

SCUP	Height : 34.00 mm Width : 9.00 mm Length : 44.75 mm	
SCEC35	Height : 31.50 mm Width : 8.00 mm Length : 45.80 mm	
SCUDD	Height : 50.00 mm Width : 10.00 mm Length : 55.60 mm	
SCUSL	Height : 41.10 mm Width : 8.00 mm Length : 47.50 mm	

End Clamp		
SCKN	Height : 34.50 mm Width : 8.00 mm Length : 44.90 mm	
SCUN	Height : 35.50 mm Width : 9.50 mm Length : 50.60 mm	

Marker For Terminal Blocks		
LABEL KN6.5	Width : 6.70 mm	

Marker carriers		
SCUDDMLH	Height : 71.50 mm Width : 11.00 mm Length : 55.60 mm	
SCUNMLH	Height : 53.50 mm Width : 11.00 mm Length : 50.60 mm	
SCKNMLH	Height : 42.00 mm Width : 16.00 mm Length : 44.70 mm	