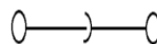
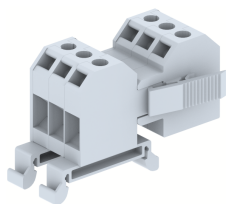


PS8M-3W

Terminal Type - PS8M - 3W , Plug & socket type terminal block , nominal voltage: 800 V , nominal current: 32 A, connection method: Screw clamp connection , number of connections: 6 , Rated cross section: 6 mm², cross section: 0.5 mm² - 6 mm², Pitch - 8 mm , mounting type: TS35/7.5 , TS35/15



Approvals



General Information

Product Name	PS8M-3W
Connection Method	Screw Connection
Rating	800 V / 32 A / 6 mm ² / 0.8 Nm
HSN Number	85389000
Standard Packing Qty (in No)	10
Country Of Origin	India
Screw thread	M3.5

Dimensions & Weight

Width	25.81 mm	1.02 inch
Length	38.8 mm	1.53 inch
Height	43.7 mm	1.72 inch
Weight of std. Packing Unit	0.62 Kg	

Material Data

Insulating Material	Polyamide 6,6
Standard Colour	Gray
Colour Variants	Red, Yellow, Blue, Black, Green, Khakhi

Rated Conductor Size

Conductor cross section flexible min	0.5 mm ²
Conductor cross section flexible max	6 mm ²
Conductor cross section solid min	0.5 mm ²
Conductor cross section solid max	6 mm ²


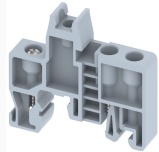
Rated Conductor Size


Conductor cross section flexible min	0.5 mm ²
Conductor cross section flexible max	6 mm ²

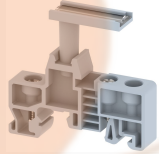
Conductor cross section solid min	0.5 mm ²
Conductor cross section solid max	6 mm ²

Product Accessories

DIN Rail Perforated		
CHKDS	Height : 15.00 mm Width : 35.00 mm Thickness : 1.50 mm Length : 2,000.00 mm	
CHKS	Height : 7.50 mm Width : 35.00 mm Thickness : 1.00 mm	
DIN Rail, Unperforated		
CHKD	Height : 15.00 mm Width : 35.00 mm Thickness : 1.50 mm	
CHK	Height : 7.50 mm Width : 35.00 mm Thickness : 1.00 mm	
End Cap		
CHKENDCAP	Height : 14.00 mm Width : 9.00 mm Length : 41.50 mm	
End Clamp		
SCUP	Height : 34.00 mm Width : 9.00 mm Length : 44.75 mm	
SCEC35	Height : 31.50 mm Width : 8.00 mm Length : 45.80 mm	
SCUDD	Height : 50.00 mm Width : 10.00 mm Length : 55.60 mm	
SCUSL	Height : 41.10 mm Width : 8.00 mm Length : 47.50 mm	

End Clamp		
SCKN	Height : 34.50 mm Width : 8.00 mm Length : 44.90 mm	
SCUN	Height : 35.50 mm Width : 9.50 mm Length : 50.60 mm	

Marker For Terminal Blocks		
LABEL KN6.5	Width : 6.70 mm	

Marker carriers		
SCUDDMLH	Height : 71.50 mm Width : 11.00 mm Length : 55.60 mm	
SCUNMLH	Height : 53.50 mm Width : 11.00 mm Length : 50.60 mm	
SCKNMLH	Height : 42.00 mm Width : 16.00 mm Length : 44.70 mm	