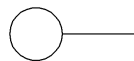
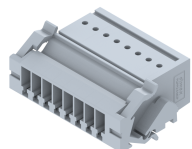


PQPP2.5M-PFT8W

Socket Type - PQPP2.5M-PFT8W , nominal voltage: 500V, nominal current: 24 A, connection method: Push-in connection, number of connections: 8, number of positions: 8, cross section: 0.08 mm² - 4 mm², AWG : 24-12, mounting type: Panel mounting / Surface mounting (Panel Feed Through)



Approvals



General Information

Product Name	PQPP2.5M-PFT8W
Connection Method	Push In Connection
Rating	500 V / 24 A / 2.5 mm ²
HSN Number	8904476705334
Standard Packing Qty (in No)	100
Country Of Origin	India
Screw thread	-

Dimensions & Weight

Width	52.25 mm	2.06 inch
Length	22.74 mm	0.9 inch
Height	38 mm	1.5 inch
Weight of std. Packing Unit	3.25 Kg	

Material Data

Insulating Material	Polyamide 6,6
Standard Colour	Gray
Colour Variants	Red, Yellow, Blue, Black, Green, Khakhi

Rated Conductor Size

Conductor cross section flexible min	0.14 mm ²
Conductor cross section flexible max	2.5 mm ²
Conductor cross section solid min	0.08 mm ²
Conductor cross section solid max	4 mm ²

Rated Conductor Size

Conductor cross section flexible min	0.14 mm ²
Conductor cross section flexible max	2.5 mm ²

Conductor cross section solid min	0.08 mm ²
Conductor cross section solid max	4 mm ²

Product Accessories

Marker For Terminal Blocks

LABEL KN5.08	Pitch : 5.08 mm	
--------------	-----------------	---

PLUG

PQPP2.5-F-8W	Height : 42.00 mm Width : 15.80 mm Pitch : 5.00 mm Length : 40.00 mm	
--------------	---	---

