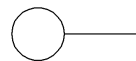
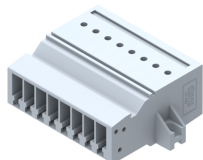


## **PQPP2.5M-HM8W**

Socket Type - PQPP2.5M-HM8W , nominal voltage: 500V, nominal current: 24 A, connection method: Push-in connection, number of connections: 8, number of positions: 8, cross section: 0.08 mm<sup>2</sup> - 4 mm<sup>2</sup>, AWG : 24-12, mounting type: Panel mounting / Surface mounting (Horizontal type)



### Approvals



### General Information

Product Name	PQPP2.5M-HM8W
Connection Method	Push In Connection
Rating	500 V / 24 A / 2.5 mm <sup>2</sup>
HSN Number	8904476705259
Standard Packing Qty (in No)	100
Country Of Origin	India
Screw thread	-

### Dimensions & Weight

Width	55.5 mm	2.19 inch
Length	18.8 mm	0.74 inch
Height	38 mm	1.5 inch
Weight of std. Packing Unit	2.93 Kg	

### Material Data

Insulating Material	Polyamide 6,6
Standard Colour	Gray
Colour Variants	Red, Yellow, Blue, Black, Green, Khakhi

### Rated Conductor Size

Conductor cross section flexible min	0.14 mm <sup>2</sup>
Conductor cross section flexible max	2.5 mm <sup>2</sup>
Conductor cross section solid min	0.08 mm <sup>2</sup>
Conductor cross section solid max	4 mm <sup>2</sup>


### Rated Conductor Size

Conductor cross section flexible min	0.14 mm <sup>2</sup>
Conductor cross section flexible max	2.5 mm <sup>2</sup>

Conductor cross section solid min	0.08 mm <sup>2</sup>
Conductor cross section solid max	4 mm <sup>2</sup>

## Product Accessories

### Marker For Terminal Blocks

LABEL KN5.08	Pitch : 5.08 mm	
--------------	-----------------	---

### PLUG

PQPP2.5-F-8W	Height : 42.00 mm Width : 15.80 mm Pitch : 5.00 mm Length : 40.00 mm	
--------------	---	---

