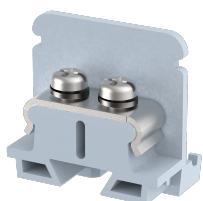


PBTM3

Terminal Type - PBTM3 , Mini Feed-through terminal block, nominal voltage: 250 V, nominal current: 20 A, Rated cross-section - 1.5 mm², connection method: Screw clamp connection, number of connections: 2, cross section: 0.2 mm² - 1.5 mm², mounting type: Panel mounted



Approvals



General Information

Product Name	PBTM3
Connection Method	Screw Connection
Rating	250 V / 20 A / 1.5 mm ² / 0.5 Nm
HSN Number	85389000
Standard Packing Qty (in No)	100
Country Of Origin	India
Screw thread	M3

Dimensions & Weight

Width	15 mm	0.59 inch
Length	25 mm	0.98 inch
Height	25 mm	0.98 inch
Weight of std. Packing Unit	0.72 Kg	

Material Data

Insulating Material	Polyamide 6,6
Standard Colour	Gray
Colour Variants	Red, Yellow, Blue, Black, Green, Khakhi

Rated Conductor Size

Conductor cross section flexible min	0.2 mm ²
Conductor cross section flexible max	1.5 mm ²
Conductor cross section solid min	0.2 mm ²
Conductor cross section solid max	1.5 mm ²

Rated Conductor Size

Conductor cross section flexible min	0.2 mm ²
Conductor cross section flexible max	1.5 mm ²

Conductor cross section solid min	0.2 mm ²
Conductor cross section solid max	1.5 mm ²

Product Accessories

End Cover

EPBM4	Height : 25.00 mm Width : 12.50 mm Length : 24.20 mm	
-------	--	---

Partition Plate

MBX	Height : 36.70 mm Width : 1.50 mm Length : 43.50 mm	
-----	---	---

