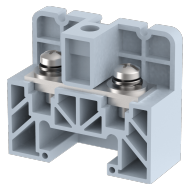


PAT30

Terminal Type - PAT30, High current connectors, nominal voltage: 500 V, nominal current: 57 A, Rated cross-section: 10 mm², connection method: Bolt connection, number of connections: 2, cross-section: 4 mm² - 10 mm², mounting type: Panel mounted / Surface mounted



Approvals



General Information

Product Name	PAT30
Connection Method	Bolt Connection
Rating	500 V / 57 A / 10 mm ² / 1.2 Nm
HSN Number	85389000
Standard Packing Qty (in No)	50
Country Of Origin	India
Screw thread	M4

Dimensions & Weight

Width	27 mm	1.06 inch
Length	38 mm	1.5 inch
Height	33 mm	1.3 inch
Weight of std. Packing Unit	1.2 Kg	

Material Data

Insulating Material	Polyamide 6,6
Standard Colour	Gray
Colour Variants	Red, Yellow, Blue, Black, Green, Khakhi

Rated Conductor Size

Conductor cross section flexible min	4 mm ²
Conductor cross section flexible max	10 mm ²
Conductor cross section solid min	4 mm ²
Conductor cross section solid max	10 mm ²


Rated Conductor Size

Conductor cross section flexible min	4 mm ²
Conductor cross section flexible max	10 mm ²

Conductor cross section solid min	4 mm ²
Conductor cross section solid max	10 mm ²

Product Accessories

End Cover

EPA30	Height : 33.00 mm Width : 26.00 mm Thickness : 4.00 mm Length : 38.00 mm	
-------	---	---

Marker For Terminal Blocks

LABEL KN8	Height : 2.43 mm Width : 8.00 mm Length : 8.50 mm	
-----------	---	---

Partition Plate

KBXF	Height : 53.40 mm Width : 1.50 mm Length : 54.00 mm	
------	---	--

