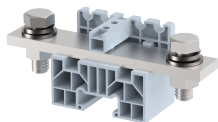


PAT150

Terminal Type - PAT150, High current connectors, nominal voltage: 800 V, nominal current: 150 A, Rated cross-section: 50 mm², connection method: Bolt connection, number of connections: 2, cross-section: 16 mm² - 50 mm², mounting type: Panel mounted / Surface mounted



Approvals



General Information

Product Name	PAT150
Connection Method	Bolt Connection
Rating	800 V / 150 A / 50 mm ² / 6 Nm
HSN Number	85389000
Standard Packing Qty (in No)	10
Country Of Origin	India
Screw thread	M8

Dimensions & Weight

Width	30 mm	1.18 inch
Length	102 mm	4.02 inch
Height	40.8 mm	1.61 inch
Weight of std. Packing Unit	1.52 Kg	

Material Data

Insulating Material	NAV
Standard Colour	Gray
Colour Variants	Red, Yellow, Blue, Black, Green, Khakhi

Rated Conductor Size

Conductor cross section flexible min	16 mm ²
Conductor cross section flexible max	50 mm ²
Conductor cross section solid min	16 mm ²
Conductor cross section solid max	50 mm ²

Rated Conductor Size

Conductor cross section flexible min	16 mm ²
Conductor cross section flexible max	50 mm ²

Conductor cross section solid min	16 mm ²
Conductor cross section solid max	50 mm ²

Product Accessories

Cover Profile		
PCPAT-30-250	Height : 11.50 mm Thickness : 1.50 mm Length : 126.00 mm	
End Cover		
EPA100	Height : 40.00 mm Width : 27.00 mm Thickness : 5.00 mm Length : 50.00 mm	
Marker For Terminal Blocks		
LABEL KN8	Height : 2.43 mm Width : 8.00 mm Length : 8.50 mm	
Partition Plate		
BPAT-30-250	Height : 78.50 mm Thickness : 3.00 mm Length : 120.00 mm	