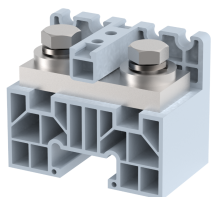


PAT100

Terminal Type - PAT100, High current connectors, nominal voltage: 1000 V, nominal current: 100 A, Rated cross-section: 25 mm², connection method: Bolt connection, number of connections: 2, cross-section: 10 mm² - 25 mm², mounting type: Panel mounted / Surface mounted



Approvals



General Information

Product Name	PAT100
Connection Method	Bolt Connection
Rating	1000 V / 100 A / 25 mm ² / 3 Nm
HSN Number	85389000
Standard Packing Qty (in No)	25
Country Of Origin	India
Screw thread	M6

Dimensions & Weight

Width	41 mm	1.61 inch
Length	50 mm	1.97 inch
Height	40 mm	1.57 inch
Weight of std. Packing Unit	0.94 Kg	

Material Data

Insulating Material	Polyamide 6,6
Standard Colour	Gray
Colour Variants	Red, Yellow, Blue, Black, Green, Khakhi

Rated Conductor Size

Conductor cross section flexible min	10 mm ²
Conductor cross section flexible max	25 mm ²
Conductor cross section solid min	10 mm ²
Conductor cross section solid max	25 mm ²

Rated Conductor Size

Conductor cross section flexible min	10 mm ²
Conductor cross section flexible max	25 mm ²

Conductor cross section solid min	10 mm ²
Conductor cross section solid max	25 mm ²

Product Accessories

End Cover

EPA100	Height : 40.00 mm Width : 27.00 mm Thickness : 5.00 mm Length : 50.00 mm	
--------	---	---

Marker For Terminal Blocks

LABEL KN8	Height : 2.43 mm Width : 8.00 mm Length : 8.50 mm	
-----------	---	---

Partition Plate

KBXF	Height : 53.40 mm Width : 1.50 mm Length : 54.00 mm	
------	---	---

