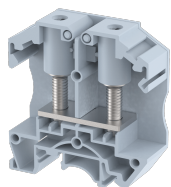


OAT25

Terminal Type - OAT25 , Feed through terminal block with secured hinged cover, nominal voltage: 1000 V, nominal current: 125 A, connection method: Stud type connection, number of connections: 2, cross section: 1.5 mm² - 35 mm², Rated Cross-section : 35 mm² , mounting type: TS 35/7.5, TS 35/15 , TS 32



Approvals



General Information

Product Name	OAT25
Connection Method	Bolt Connection
Rating	1000 V / 125 A / 35 mm ² / 2.5 Nm
HSN Number	NAV
Standard Packing Qty (in No)	50
Country Of Origin	India
Screw thread	M6

Dimensions & Weight

Width	18 mm	0.71 inch
Length	60 mm	2.36 inch
Height	63 mm	2.48 inch
Weight of std. Packing Unit	2.41 Kg	

Material Data

Insulating Material	Polyamide 6,6
Standard Colour	Gray
Colour Variants	Red, Yellow, Blue, Black, Green, Khakhi

Rated Conductor Size

Conductor cross section flexible min	1.5 mm ²
Conductor cross section flexible max	35 mm ²
Conductor cross section solid min	1.5 mm ²
Conductor cross section solid max	35 mm ²

Rated Conductor Size

Conductor cross section flexible min	1.5 mm ²
Conductor cross section flexible max	35 mm ²

Conductor cross section solid min	1.5 mm ²
Conductor cross section solid max	35 mm ²

Ratings - ATEX

ATEX Standard	EN 60079-7
ATEX Nominal Voltage U _n	800 V
ATEX Nominal Current I _n	112 A
ATEX Cross Sec. Flexible Max.	3.5 mm ²

Ratings - UL

UL Standard	
B - UL Nominal Voltage U _N	V
B - UL Nominal Current I _N	A
B - UL Wire Min	AWG
B - UL Wire Max	AWG

Product Accessories

Cover Profile		
PCK3	Height : 28.00 mm Width : 58.35 mm Thickness : 1.00 mm	
Cover Profile Carrier		
UHDD	Height : 74.50 mm Thickness : 2.00 mm Length : 55.82 mm	
DIN Rail Perforated		
CHKDS	Height : 15.00 mm Width : 35.00 mm Thickness : 1.50 mm Length : 2,000.00 mm	
CHKS	Height : 7.50 mm Width : 35.00 mm Thickness : 1.00 mm	
CHS	Height : 15.00 mm Width : 32.00 mm Thickness : 1.50 mm	

DIN Rail, Unperforated		
CHKD	Height : 15.00 mm Width : 35.00 mm Thickness : 1.50 mm	
CHK	Height : 7.50 mm Width : 35.00 mm Thickness : 1.00 mm	
End Cap		
CHKENDCAP	Height : 14.00 mm Width : 9.00 mm Length : 41.50 mm	
End Clamp		
SCUP	Height : 34.00 mm Width : 9.00 mm Length : 44.75 mm	
SCEC35	Height : 31.50 mm Width : 8.00 mm Length : 45.80 mm	
SCUSL	Height : 41.10 mm Width : 8.00 mm Length : 47.50 mm	
SCUDD	Height : 50.00 mm Width : 10.00 mm Length : 55.60 mm	
DCKN	Height : 33.00 mm Width : 6.00 mm Length : 43.50 mm	
DCKN10	Height : 35.00 mm Width : 10.00 mm Length : 43.50 mm	
SCKN	Height : 34.50 mm Width : 8.00 mm Length : 44.90 mm	
SCUN	Height : 35.50 mm Width : 9.50 mm Length : 50.60 mm	

End Cover		
OEP 25	Height : 53.10 mm Width : 1.50 mm Length : 60.00 mm	
Insertion Bridge		
KSL7-2W	Height : 31.50 mm Width : 3.50 mm Pitch : 18.00 mm Length : 29.00 mm	
KSL7-4W	Height : 31.50 mm Width : 3.50 mm Pitch : 18.00 mm Length : 65.00 mm	
Marker For Terminal Blocks		
LABEL KN17	Height : 2.50 mm Width : 17.00 mm Length : 8.50 mm	
Marker carriers		
SCUDDMLH	Height : 71.50 mm Width : 11.00 mm Length : 55.60 mm	
SCUNMLH	Height : 53.50 mm Width : 11.00 mm Length : 50.60 mm	
DCKNMLH	Height : 45.00 mm Width : 10.00 mm Length : 43.50 mm	
SCKNMLH	Height : 42.00 mm Width : 16.00 mm Length : 44.70 mm	