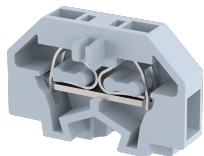


MCT1.5

Terminal Type -MCT1.5 , Mini and Micro Terminal block, nominal voltage: 500 V, nominal current: 17.5 A, Rated cross-section - 1.5 mm², connection method: Spring Cage connection, number of connections: 2, cross section: 0.5 mm² - 1.5 mm², AWG : 22-16 , mounting type: Panel Mounted



Approvals



General Information

Product Name	MCT1.5
Connection Method	Spring Cage Connection
Rating	500 V / 17.5 A / 1.5 mm ²
HSN Number	85389000
Standard Packing Qty (in No)	100
Country Of Origin	India
Screw thread	-

Dimensions & Weight

Width	5 mm	0.2 inch
Length	25 mm	0.98 inch
Height	17.2 mm	0.68 inch
Weight of std. Packing Unit	0.3 Kg	

Material Data

Insulating Material	Polyamide 6,6
Standard Colour	Gray
Colour Variants	Red, Yellow, Blue, Black, Green, Khakhi

Rated Conductor Size

Conductor cross section flexible min	0.5 mm ²
Conductor cross section flexible max	1.5 mm ²
Conductor cross section solid min	0.5 mm ²
Conductor cross section solid max	1.5 mm ²

Rated Conductor Size

Conductor cross section flexible min	0.5 mm ²
Conductor cross section flexible max	1.5 mm ²

Conductor cross section solid min	0.5 mm ²
Conductor cross section solid max	1.5 mm ²

Ratings - CSA

CSA Standard	CSA C22.2 NO 158
B - CSA Nominal Voltage U _N	300 V
B - CSA Nominal Current I _N	10 A
B - CSA Wire Min	22 AWG
B - CSA Wire Max	16 AWG

Ratings - UL

UL Standard	
B - UL Nominal Voltage U _N	0 V
B - UL Nominal Current I _N	0 A
B - UL Wire Min	AWG
B - UL Wire Max	AWG

Product Accessories

End Cover	
MEP1.5	Height : 17.20 mm Width : 12.30 mm Length : 25.00 mm
	
Insertion Bridge	
MSL1.5	Height : 15.20 mm Width : 9.25 mm Pitch : 5.50 mm Length : 7.75 mm
	