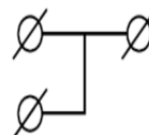
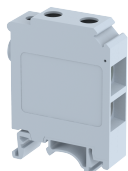


## LPT235

Terminal Type - LPT235 , Feed-through terminal block, nominal voltage: 400 V, nominal current: 125 A, connection method: Screw connection, Operated by - 3 mm / 4 mm Allen key , number of connections: 3 , cross section: 6 mm<sup>2</sup> - 35 mm<sup>2</sup> , mounting type: TS 35/7.5, TS 35/15 , TS 32



### Approvals



### General Information

Product Name	LPT235
Connection Method	Screw Connection
Rating	400 V / 125 A / IC - 35 mm <sup>2</sup> , OG - 6 mm <sup>2</sup> / NAV Nm
HSN Number	85389000
Standard Packing Qty (in No)	10
Country Of Origin	India
Screw thread	NAV

### Dimensions & Weight

Width	14.3 mm	0.56 inch
Length	44.3 mm	1.74 inch
Height	57.6 mm	2.27 inch
Weight of std. Packing Unit	1.09 Kg	

### Material Data

Insulating Material	Polyamide 6,6
Standard Colour	Gray
Colour Variants	Red, Yellow, Blue, Black, Green, Khakhi

### Rated Conductor Size

Conductor cross section flexible min	6 mm <sup>2</sup>
Conductor cross section flexible max	35 mm <sup>2</sup>
Conductor cross section solid min	6 mm <sup>2</sup>
Conductor cross section solid max	35 mm <sup>2</sup>

### Rated Conductor Size

Conductor cross section flexible min	6 mm <sup>2</sup>
Conductor cross section flexible max	35 mm <sup>2</sup>

Conductor cross section solid min	6 mm <sup>2</sup>
Conductor cross section solid max	35 mm <sup>2</sup>

**Product Accessories**

**Cover Profile**

PCK3	Height : 28.00 mm Width : 58.35 mm Thickness : 1.00 mm	
------	--	---



**Cover Profile Carrier**

UHDD	Height : 74.50 mm Thickness : 2.00 mm Length : 55.82 mm	
------	---	---

**DIN Rail Perforated**

CHKDS	Height : 15.00 mm Width : 35.00 mm Thickness : 1.50 mm Length : 2,000.00 mm	
CHKS	Height : 7.50 mm Width : 35.00 mm Thickness : 1.00 mm	
CHS	Height : 15.00 mm Width : 32.00 mm Thickness : 1.50 mm	

**DIN Rail, Unperforated**

CHKD	Height : 15.00 mm Width : 35.00 mm Thickness : 1.50 mm	
CHK	Height : 7.50 mm Width : 35.00 mm Thickness : 1.00 mm	

**End Cap**

CHKENDCAP	Height : 14.00 mm Width : 9.00 mm Length : 41.50 mm	
-----------	---	---

**Marker For Terminal Blocks**

LABEL KN12	Height : 2.43 mm Width : 12.00 mm Length : 8.50 mm	
------------	--	---