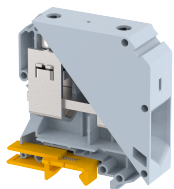


KUT95

Terminal Type - KUT95 , Feed-through terminal block, nominal voltage: 1000 V, nominal current: 232 A, connection method: Screw clamp connection , Operated by - 6 mm Allen key , number of connections: 2, Rated cross section: 95 mm², cross section: 25 mm² - 120 mm², AWG: 4/0 - 2 , mounting type: TS35/7.5 , TS35/15 , and TS32



Approvals



General Information

Product Name	KUT95
Connection Method	Screw Connection
Rating	1000 V / 232 A / 95 mm ² / 6 Nm
HSN Number	8904476702173
Standard Packing Qty (in No)	10
Country Of Origin	India
Screw thread	M8

Dimensions & Weight

Width	25 mm	0.98 inch
Length	83 mm	3.27 inch
Height	90 mm	3.54 inch
Weight of std. Packing Unit	2.29 Kg	

Material Data

Insulating Material	Polyamide 6,6
Standard Colour	Gray
Colour Variants	Red, Yellow, Blue, Black, Green, Khakhi

Rated Conductor Size

Conductor cross section flexible min	25 mm ²
Conductor cross section flexible max	95 mm ²
Conductor cross section solid min	25 mm ²
Conductor cross section solid max	120 mm ²

Rated Conductor Size

Conductor cross section flexible min	25 mm ²
Conductor cross section flexible max	95 mm ²

Conductor cross section solid min	25 mm ²
Conductor cross section solid max	120 mm ²

Ratings - ATEX

ATEX Standard	EN-60079-7
ATEX Nominal Voltage U _n	1000 V
ATEX Nominal Current I _n	232 A
ATEX Cross Sec. Flexible Max.	95 mm ²



Ratings - CSA

CSA Standard	CSA C22.2 NO 158
B - CSA Nominal Voltage U _N	600 V
B - CSA Nominal Current I _N	230 A
B - CSA Wire Min	2 AWG
B - CSA Wire Max	4/0 AWG

Ratings - UL

UL Standard	UL 1059
B - UL Nominal Voltage U _N	600 V
B - UL Nominal Current I _N	230 A
B - UL Wire Min	2 AWG
B - UL Wire Max	4/0 AWG

Product Accessories

DIN Rail Perforated		
CHKDS	Height : 15.00 mm Width : 35.00 mm Thickness : 1.50 mm Length : 2,000.00 mm	
CHKS	Height : 7.50 mm Width : 35.00 mm Thickness : 1.00 mm	
CHS	Height : 15.00 mm Width : 32.00 mm Thickness : 1.50 mm	
DIN Rail, Unperforated		
CHKD	Height : 15.00 mm Width : 35.00 mm Thickness : 1.50 mm	

DIN Rail, Unperforated		
CHK	Height : 7.50 mm Width : 35.00 mm Thickness : 1.00 mm	
End Cap		
CHKENDCAP	Height : 14.00 mm Width : 9.00 mm Length : 41.50 mm	
End Clamp		
SCEC35	Height : 31.50 mm Width : 8.00 mm Length : 45.80 mm	
SCUSL	Height : 41.10 mm Width : 8.00 mm Length : 47.50 mm	
SCUDD	Height : 50.00 mm Width : 10.00 mm Length : 55.60 mm	
SCUN	Height : 35.50 mm Width : 9.50 mm Length : 50.60 mm	
Marker For Terminal Blocks		
LABEL KN17	Width : 17.00 mm	
Marker carriers		
SCUDDMLH	Height : 71.50 mm Width : 11.00 mm Length : 55.60 mm	
SCUNMLH	Height : 53.50 mm Width : 11.00 mm Length : 50.60 mm	
Tap Terminal		
KTT6	Height : 31.00 mm Width : 28.00 mm Thickness : 9.00 mm	