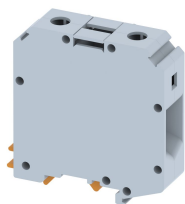


## KUT50

Terminal Type - KUT50 , Feed-through terminal block, nominal voltage: 1000 V, nominal current: 150 A, connection method: Screw connection, number of connections: 2, Rated cross section: 50 mm<sup>2</sup>, cross-section: 16-70 , AWG: 6 - 2/0 , mounting type: TS35/7.5 , TS35/15 , and TS32



### Approvals



### General Information

Product Name	KUT50
Connection Method	Screw Connection
Rating	1000 V / 150 A / 50 mm <sup>2</sup> / 3 Nm
HSN Number	8904476702159
Standard Packing Qty (in No)	10
Country Of Origin	India
Screw thread	M6

### Dimensions & Weight

Width	20.5 mm	0.81 inch
Length	71 mm	2.8 inch
Height	76 mm	2.99 inch
Weight of std. Packing Unit	1.24 Kg	

### Material Data

Insulating Material	Polyamide 6,6
Standard Colour	Gray
Colour Variants	Red, Yellow, Blue, Black, Green, Khakhi

### Rated Conductor Size

Conductor cross section flexible min	16 mm <sup>2</sup>
Conductor cross section flexible max	50 mm <sup>2</sup>
Conductor cross section solid min	16 mm <sup>2</sup>
Conductor cross section solid max	70 mm <sup>2</sup>

### Rated Conductor Size

Conductor cross section flexible min	16 mm <sup>2</sup>
Conductor cross section flexible max	50 mm <sup>2</sup>

Conductor cross section solid min	16 mm <sup>2</sup>
Conductor cross section solid max	70 mm <sup>2</sup>

### Ratings - ATEX

ATEX Standard	EN-60079-7
ATEX Nominal Voltage U <sub>n</sub>	1000 V
ATEX Nominal Current I <sub>n</sub>	150 A
ATEX Cross Sec. Flexible Max.	50 mm <sup>2</sup>


### Ratings - CSA


CSA Standard	CSA C22.2 NO 158
B - CSA Nominal Voltage U <sub>N</sub>	600 V
B - CSA Nominal Current I <sub>N</sub>	150 A
B - CSA Wire Min	6 AWG
B - CSA Wire Max	2/0 AWG

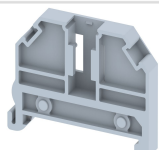
### Ratings - UL

UL Standard	UL 1059
B - UL Nominal Voltage U <sub>N</sub>	600 V
B - UL Nominal Current I <sub>N</sub>	150 A
B - UL Wire Min	6 AWG
B - UL Wire Max	2/0 AWG

### Product Accessories

DIN Rail Perforated		
CHKDS	Height : 15.00 mm Width : 35.00 mm Thickness : 1.50 mm Length : 2,000.00 mm	
CHKS	Height : 7.50 mm Width : 35.00 mm Thickness : 1.00 mm	
CHS	Height : 15.00 mm Width : 32.00 mm Thickness : 1.50 mm	

DIN Rail, Unperforated		
CHKD	Height : 15.00 mm Width : 35.00 mm Thickness : 1.50 mm	

<b>DIN Rail, Unperforated</b>		
CHK	Height : 7.50 mm Width : 35.00 mm Thickness : 1.00 mm	
<b>End Cap</b>		
CHKENDCAP	Height : 14.00 mm Width : 9.00 mm Length : 41.50 mm	
<b>End Clamp</b>		
SCEC35	Height : 31.50 mm Width : 8.00 mm Length : 45.80 mm	
SCUP	Height : 34.00 mm Width : 9.00 mm Length : 44.75 mm	
SCUDD	Height : 50.00 mm Width : 10.00 mm Length : 55.60 mm	
SCUSL	Height : 41.10 mm Width : 8.00 mm Length : 47.50 mm	
DCKN	Height : 33.00 mm Width : 6.00 mm Length : 43.50 mm	
DCKN10	Height : 35.00 mm Width : 10.00 mm Length : 43.50 mm	
SCKN	Height : 34.50 mm Width : 8.00 mm Length : 44.90 mm	
SCUN	Height : 35.50 mm Width : 9.50 mm Length : 50.60 mm	

<b>Fixed Bridge</b>		
CCLA50-2W	Height : 28.50 mm Width : 12.00 mm Pitch : 20.50 mm Length : 37.00 mm	
CCLA50-3W	Height : 28.50 mm Width : 12.00 mm Pitch : 20.50 mm Length : 57.50 mm	
CCLA50-5W	Height : 28.50 mm Width : 12.00 mm Pitch : 20.50 mm Length : 98.50 mm	
<b>Marker For Terminal Blocks</b>		
LABEL KN17	Width : 17.00 mm	
<b>Marker carriers</b>		
SCUDDMLH	Height : 71.50 mm Width : 11.00 mm Length : 55.60 mm	
SCUNMLH	Height : 53.50 mm Width : 11.00 mm Length : 50.60 mm	
DCKNMLH	Height : 45.00 mm Width : 10.00 mm Length : 43.50 mm	
SCKNMLH	Height : 42.00 mm Width : 16.00 mm Length : 44.70 mm	
<b>Tap Terminal</b>		
KTT6	Height : 31.00 mm Width : 28.00 mm Thickness : 9.00 mm	