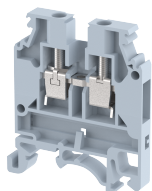


## KUT4N

Terminal Type - KUT4N , Feed-through terminal block for photo voltaic applications , nominal voltage: 1000 V, nominal current: 32 A , Rate Cross-section : 4 mm<sup>2</sup>, connection method: Screw connection, number of connections: 2, cross section: 0.5 mm<sup>2</sup> - 4 mm<sup>2</sup>, AWG: 20 - 10, mounting type: TS 35/7.5, TS 35/15 , TS 32



### Approvals



### General Information

Product Name	KUT4N
Connection Method	Screw Connection
Rating	1000 V / 32 A / 4 mm <sup>2</sup> / 0.5 Nm
HSN Number	8904476702197
Standard Packing Qty (in No)	100
Country Of Origin	INDIA
Screw thread	M3

### Dimensions & Weight

Width	6 mm	0.24 inch
Length	44.25 mm	1.74 inch
Height	50.8 mm	2 inch
Weight of std. Packing Unit	1.3 Kg	

### Material Data

Insulating Material	Polyamide 6,6
Standard Colour	Gray
Colour Variants	Red, Yellow, Blue, Black, Green, Khakhi

### Rated Conductor Size

Conductor cross section flexible min	0.5 mm <sup>2</sup>
Conductor cross section flexible max	4 mm <sup>2</sup>
Conductor cross section solid min	0.5 mm <sup>2</sup>
Conductor cross section solid max	4 mm <sup>2</sup>

### Rated Conductor Size

Conductor cross section flexible min	0.5 mm <sup>2</sup>
Conductor cross section flexible max	4 mm <sup>2</sup>

Conductor cross section solid min	0.5 mm <sup>2</sup>
Conductor cross section solid max	4 mm <sup>2</sup>

### Ratings - ATEX

ATEX Standard	EN 60079-7
ATEX Nominal Voltage U <sub>n</sub>	630 V
ATEX Nominal Current I <sub>n</sub>	24 A
ATEX Cross Sec. Flexible Max.	4 mm <sup>2</sup>

### Ratings - UL

UL Standard	UL 1059
B - UL Nominal Voltage U <sub>N</sub>	600 V
B - UL Nominal Current I <sub>N</sub>	30 A
B - UL Wire Min	20 AWG
B - UL Wire Max	10 AWG

### Product Accessories

Cover Profile		
PCK3	Height : 28.00 mm Width : 58.35 mm Thickness : 1.00 mm	
Cover Profile Carrier		
UHDD	Height : 74.50 mm Thickness : 2.00 mm Length : 55.82 mm	
DIN Rail Perforated		
CHKDS	Height : 15.00 mm Width : 35.00 mm Thickness : 1.50 mm Length : 2,000.00 mm	
CHKS	Height : 7.50 mm Width : 35.00 mm Thickness : 1.00 mm	
CHS	Height : 15.00 mm Width : 32.00 mm Thickness : 1.50 mm	

<b>DIN Rail, Unperforated</b>		
CHKD	Height : 15.00 mm Width : 35.00 mm Thickness : 1.50 mm	
CHK	Height : 7.50 mm Width : 35.00 mm Thickness : 1.00 mm	
<b>End Cap</b>		
CHKENDCAP	Height : 14.00 mm Width : 9.00 mm Length : 41.50 mm	
<b>End Clamp</b>		
SCUP	Height : 34.00 mm Width : 9.00 mm Length : 44.75 mm	
SCEC35	Height : 31.50 mm Width : 8.00 mm Length : 45.80 mm	
SCUSL	Height : 41.10 mm Width : 8.00 mm Length : 47.50 mm	
SCUDD	Height : 50.00 mm Width : 10.00 mm Length : 55.60 mm	
DCKN	Height : 33.00 mm Width : 6.00 mm Length : 43.50 mm	
DCKN10	Height : 35.00 mm Width : 10.00 mm Length : 43.50 mm	
SCKN	Height : 34.50 mm Width : 8.00 mm Length : 44.90 mm	
SCUN	Height : 35.50 mm Width : 9.50 mm Length : 50.60 mm	

<b>End Cover</b>		
KPXN	Height : 41.50 mm Width : 1.50 mm Length : 41.50 mm	
<b>Fixed Bridge</b>		
CCLA4N-10W	Height : 21.00 mm Width : 5.00 mm Pitch : 6.00 mm Length : 59.30 mm	
CCLA4N-3W	Height : 21.00 mm Width : 5.00 mm Pitch : 6.00 mm Length : 17.30 mm	
CCLA4N-4W	Height : 21.00 mm Width : 5.00 mm Pitch : 6.00 mm Length : 23.30 mm	
CCLA4N-5W	Height : 21.00 mm Width : 5.00 mm Pitch : 6.00 mm Length : 29.30 mm	
CCLA4N-2W	Height : 21.00 mm Width : 5.00 mm Pitch : 6.00 mm Length : 11.30 mm	
<b>Insertion Bridge</b>		
SLC4N-10W	Height : 23.00 mm Width : 3.00 mm Pitch : 6.00 mm Length : 58.60 mm	
SLC4N-3W	Height : 23.00 mm Width : 3.00 mm Pitch : 6.00 mm Length : 16.65 mm	
SLC4N-4W	Height : 23.00 mm Width : 3.00 mm Pitch : 6.00 mm Length : 22.65 mm	
SLC4N-5W	Height : 23.00 mm Width : 3.00 mm Pitch : 6.00 mm Length : 28.65 mm	
SLC4N-6W	Height : 23.00 mm Width : 3.00 mm Pitch : 6.00 mm Length : 34.65 mm	

Insertion Bridge		
SLC4N-2W	Height : 23.00 mm Width : 3.00 mm Pitch : 6.00 mm Length : 10.91 mm	
Marker For Terminal Blocks		
LABEL KN5.5	Height : 2.42 mm Width : 6.00 mm Length : 7.50 mm	
Partition Plate		
KNBF 2.5/10	Height : 58.00 mm Width : 1.50 mm Length : 55.50 mm	
Switching Jumper		
LSR6N	Height : 22.20 mm Width : 5.00 mm	
RSLDD	Thickness : 1.20 mm Pitch : 6.00 mm Length : 11.00 mm	
Warning Label		
WL4	Height : 25.20 mm Thickness : 1.10 mm Length : 28.80 mm	
Marker carriers		
SCUDDMLH	Height : 71.50 mm Width : 11.00 mm Length : 55.60 mm	
SCUNMLH	Height : 53.50 mm Width : 11.00 mm Length : 50.60 mm	
DCKNMLH	Height : 45.00 mm Width : 10.00 mm Length : 43.50 mm	
SCKNMLH	Height : 42.00 mm Width : 16.00 mm Length : 44.70 mm	