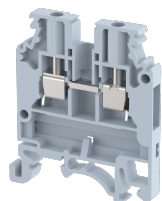


KUT2.5N

Terminal Type - KUT2.5N , Feed-through terminal block for photo voltaic applications, nominal voltage: 1000 V, nominal current : 24 A , Rated Cross-section : 2.5mm², connection method: Screw connection, number of connections: 2, cross section: 0.5 mm² - 4 mm², AWG: 20 - 12, mounting type: TS 35/7.5, TS 35/15 , TS 32



Approvals



General Information

Product Name	KUT2.5N
Connection Method	Screw Connection
Rating	1000 V / 24 A / 2.5 mm ² / 0.4 Nm
HSN Number	8904476702180
Standard Packing Qty (in No)	100
Country Of Origin	India
Screw thread	M2.6

Dimensions & Weight

Width	5 mm	0.2 inch
Length	44.25 mm	1.74 inch
Height	50.8 mm	2 inch
Weight of std. Packing Unit	0.85 Kg	

Material Data

Insulating Material	Polyamide 6,6
Standard Colour	Gray
Colour Variants	Red, Yellow, Blue, Black, Green, Khakhi

Rated Conductor Size

Conductor cross section flexible min	0.5 mm ²
Conductor cross section flexible max	2.5 mm ²
Conductor cross section solid min	0.5 mm ²
Conductor cross section solid max	4 mm ²

Rated Conductor Size

Conductor cross section flexible min	0.5 mm ²
Conductor cross section flexible max	2.5 mm ²

Conductor cross section solid min	0.5 mm ²
Conductor cross section solid max	4 mm ²

Ratings - ATEX

ATEX Standard	EN 60079-7
ATEX Nominal Voltage U _n	800 V
ATEX Nominal Current I _n	20 A
ATEX Cross Sec. Flexible Max.	2.5 mm ²

Ratings - UL

UL Standard	UL 1059
B - UL Nominal Voltage U _N	600 V
B - UL Nominal Current I _N	20 A
B - UL Wire Min	20 AWG
B - UL Wire Max	12 AWG

Product Accessories

Cover Profile		
PCK3	Height : 28.00 mm Width : 58.35 mm Thickness : 1.00 mm	
Cover Profile Carrier		
UHDD	Height : 74.50 mm Thickness : 2.00 mm Length : 55.82 mm	
DIN Rail Perforated		
CHKDS	Height : 15.00 mm Width : 35.00 mm Thickness : 1.50 mm Length : 2,000.00 mm	
CHKS	Height : 7.50 mm Width : 35.00 mm Thickness : 1.00 mm	
CHS	Height : 15.00 mm Width : 32.00 mm Thickness : 1.50 mm	

DIN Rail, Unperforated		
CHKD	Height : 15.00 mm Width : 35.00 mm Thickness : 1.50 mm	
CHK	Height : 7.50 mm Width : 35.00 mm Thickness : 1.00 mm	
End Cap		
CHKENDCAP	Height : 14.00 mm Width : 9.00 mm Length : 41.50 mm	
End Clamp		
SCUP	Height : 34.00 mm Width : 9.00 mm Length : 44.75 mm	
SCEC35	Height : 31.50 mm Width : 8.00 mm Length : 45.80 mm	
SCUSL	Height : 41.10 mm Width : 8.00 mm Length : 47.50 mm	
SCUDD	Height : 50.00 mm Width : 10.00 mm Length : 55.60 mm	
DCKN	Height : 33.00 mm Width : 6.00 mm Length : 43.50 mm	
DCKN10	Height : 35.00 mm Width : 10.00 mm Length : 43.50 mm	
SCKN	Height : 34.50 mm Width : 8.00 mm Length : 44.90 mm	
SCUN	Height : 35.50 mm Width : 9.50 mm Length : 50.60 mm	

End Cover		
KPXN	Height : 41.50 mm Width : 1.50 mm Length : 41.50 mm	
Fixed Bridge		
CCLM2.5N-2W	Height : 20.00 mm Width : 5.00 mm Pitch : 5.00 mm Length : 9.80 mm	
CCLM2.5N-10W	Height : 20.00 mm Width : 5.00 mm Pitch : 5.00 mm Length : 49.80 mm	
CCLM2.5N-3W	Height : 20.00 mm Width : 5.00 mm Pitch : 5.00 mm Length : 14.80 mm	
CCLM2.5N-4W	Height : 20.00 mm Width : 5.00 mm Pitch : 5.00 mm Length : 19.80 mm	
CCLM2.5N-5W	Height : 20.00 mm Width : 5.00 mm Pitch : 5.00 mm Length : 24.80 mm	
Insertion Bridge		
SLC2.5N-2W	Width : 9.60 mm Pitch : 5.00 mm Length : 23.00 mm	
SLC2.5N-10W	Width : 49.20 mm Pitch : 5.00 mm Length : 23.00 mm	
SLC2.5N-3W	Width : 14.60 mm Pitch : 5.00 mm Length : 23.00 mm	
SLC2.5N-4W	Width : 19.60 mm Pitch : 5.00 mm Length : 23.00 mm	
SLC2.5N-5W	Width : 24.60 mm Pitch : 5.00 mm Length : 23.00 mm	

Marker For Terminal Blocks		
LABEL KN5	Height : 2.42 mm Width : 5.00 mm Length : 7.50 mm	
Partition Plate		
KNBF 2.5/10	Height : 58.00 mm Width : 1.50 mm Length : 55.50 mm	
Switching Jumper		
LSR2.5N		
RSL2.5N		
Warning Label		
WL2.5N	Height : 24.00 mm Thickness : 1.10 mm Length : 24.00 mm	
Marker carriers		
SCUDDMLH	Height : 71.50 mm Width : 11.00 mm Length : 55.60 mm	
SCUNMLH	Height : 53.50 mm Width : 11.00 mm Length : 50.60 mm	
DCKNMLH	Height : 45.00 mm Width : 10.00 mm Length : 43.50 mm	
SCKNMLH	Height : 42.00 mm Width : 16.00 mm Length : 44.70 mm	