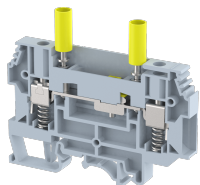


KULTD6

Terminal Type - KULTD6, Test Disconnect Terminal Block, nominal voltage: 1000 V, nominal current: 41 A, Rated cross-section- 6 mm² , connection method: Screw connection with spring support, number of connections: 2, cross-section: 0.5 mm² - 10 mm² , AWG: 24-8 , mounting type: TS35/7.5, TS35/15 and TS32



Approvals



General Information

Product Name	KULTD6
Connection Method	Screw Connection with spring support
Rating	1000 V / 41 A / 6 mm ² / 1 Nm
HSN Number	8904476703514
Standard Packing Qty (in No)	50
Country Of Origin	India
Screw thread	M3.5

Dimensions & Weight

Width	8 mm	0.31 inch
Length	85.2 mm	3.35 inch
Height	71.15 mm	2.8 inch
Weight of std. Packing Unit	2.05 Kg	

Material Data

Insulating Material	Polyamide 6,6
Standard Colour	Gray
Colour Variants	Red, Yellow, Blue, Black, Green, Khakhi

Rated Conductor Size

Conductor cross section flexible min	0.5 mm ²
Conductor cross section flexible max	6 mm ²
Conductor cross section solid min	0.5 mm ²
Conductor cross section solid max	10 mm ²

Rated Conductor Size

Conductor cross section flexible min	0.5 mm ²
Conductor cross section flexible max	6 mm ²

Conductor cross section solid min	0.5 mm ²
Conductor cross section solid max	10 mm ²

Ratings - ATEX

ATEX Standard	EN 60079-7
ATEX Nominal Voltage U _n	550 V
ATEX Nominal Current I _n	32 A
ATEX Cross Sec. Flexible Max.	6 mm ²


Ratings - CSA


CSA Standard	CSA C22.2 No. 158
B - CSA Nominal Voltage U _N	600 V
B - CSA Nominal Current I _N	35 A
B - CSA Wire Min	24 AWG
B - CSA Wire Max	8 AWG

Ratings - UL

UL Standard	UL 1059
B - UL Nominal Voltage U _N	600 V
B - UL Nominal Current I _N	35 A
B - UL Wire Min	24 AWG
B - UL Wire Max	8 AWG

Product Accessories

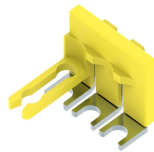
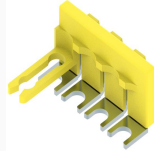
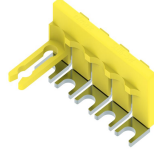
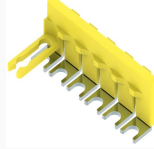
DIN Rail Perforated		
CHKDS	Height : 15.00 mm Width : 35.00 mm Thickness : 1.50 mm Length : 2,000.00 mm	
CHKS	Height : 7.50 mm Width : 35.00 mm Thickness : 1.00 mm	
CHS	Height : 15.00 mm Width : 32.00 mm Thickness : 1.50 mm	

DIN Rail, Unperforated		
CHKD	Height : 15.00 mm Width : 35.00 mm Thickness : 1.50 mm	

DIN Rail, Unperforated		
CHK	Height : 7.50 mm Width : 35.00 mm Thickness : 1.00 mm	
End Cap		
CHKENDCAP	Height : 14.00 mm Width : 9.00 mm Length : 41.50 mm	
End Clamp		
SCUP	Height : 34.00 mm Width : 9.00 mm Length : 44.75 mm	
SCEC35	Height : 31.50 mm Width : 8.00 mm Length : 45.80 mm	
SCUSL	Height : 41.10 mm Width : 8.00 mm Length : 47.50 mm	
SCUDD	Height : 50.00 mm Width : 10.00 mm Length : 55.60 mm	
DCKN	Height : 33.00 mm Width : 6.00 mm Length : 43.50 mm	
DCKN10	Height : 35.00 mm Width : 10.00 mm Length : 43.50 mm	
SCKN	Height : 34.50 mm Width : 8.00 mm Length : 44.90 mm	
SCUN	Height : 35.50 mm Width : 9.50 mm Length : 50.60 mm	

End Cover		
KPSLD	Height : 46.40 mm Width : 2.00 mm Length : 85.10 mm	
Fixed Bridge		
CCLAKG6-10W	Pitch : 8.00 mm Length : 80.45 mm	
CCLAKG6-2W	Pitch : 8.00 mm Length : 16.45 mm	
CCLAKG6-3W	Pitch : 8.00 mm Length : 24.45 mm	
CCLAKG6-4W	Pitch : 8.00 mm Length : 32.45 mm	
CCLAKG6-5W	Pitch : 8.00 mm Length : 40.45 mm	
CCLAKG6-6W	Pitch : 8.00 mm Length : 48.45 mm	
CCLAKG6(4+1)AW	Height : 65.65 mm Width : 9.80 mm Length : 64.45 mm	
Insertion Bridge		
KUSLD6(2)AW	Width : 24.45 mm Length : 11.25 mm	
KUSLD6(2+1)AW	Width : 34.00 mm Length : 11.25 mm	
KUSLD6(3)AW	Width : 40.45 mm Length : 11.25 mm	

Insertion Bridge		
KUSLD6(3+1)AW	Width : 48.45 mm Length : 11.25 mm	
KUSLD6(4)AW	Width : 56.45 mm Length : 11.25 mm	
KUSLD6(4+1)AW	Width : 56.45 mm Length : 11.25 mm	
KSLD6-10W	Width : 79.00 mm Pitch : 8.00 mm Length : 34.00 mm	
KSLD6-2W	Width : 15.00 mm Pitch : 8.00 mm Length : 34.00 mm	
KSLD6-3W	Width : 23.00 mm Pitch : 8.00 mm Length : 34.00 mm	
KSLD6(3+1)AW	Height : 34.00 mm Width : 3.20 mm Thickness : 1.20 mm Pitch : 8.00 mm Length : 47.00 mm	
KSLD6-7W	Height : 34.00 mm Width : 3.20 mm Thickness : 1.20 mm Pitch : 8.00 mm Length : 55.00 mm	
Marker For Terminal Blocks		
LABEL KN8	Height : 2.43 mm Width : 8.00 mm Length : 8.50 mm	
Switching Jumper		
SLD6-10W	Height : 13.60 mm Pitch : 8.00 mm Length : 78.60 mm	
SLD6-2W	Height : 13.60 mm Pitch : 8.00 mm Length : 14.60 mm	

Switching Jumper		
SLD6-3W	Height : 13.60 mm Pitch : 8.00 mm Length : 22.60 mm	
SLD6-4W	Height : 13.60 mm Pitch : 8.00 mm Length : 30.60 mm	
SLD6-5W	Height : 13.60 mm Pitch : 8.00 mm Length : 38.60 mm	
SLD6-6W	Height : 13.60 mm Pitch : 8.00 mm Length : 46.40 mm	

Marker carriers		
SCUDDMLH	Height : 71.50 mm Width : 11.00 mm Length : 55.60 mm	
SCUNMLH	Height : 53.50 mm Width : 11.00 mm Length : 50.60 mm	
DCKNMLH	Height : 45.00 mm Width : 10.00 mm Length : 43.50 mm	
SCKNMLH	Height : 42.00 mm Width : 16.00 mm Length : 44.70 mm	

Switching Lock		
KULTD6LP	Height : 32.30 mm Thickness : 5.75 mm Length : 15.85 mm	