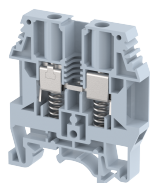


## KULT6

Terminal Type - KULT6 , Spring loaded feed through terminal block, nominal voltage: 1000 V, nominal current: 41 A, Rated cross-section - 6.0 mm<sup>2</sup>, connection method: Screw connection with spring support, number of connections: 2, cross-section: 0.5 mm<sup>2</sup> - 10 mm<sup>2</sup>, AWG: 24 - 8 , mounting type: TS 35/7.5, TS 35/15 , TS 32



### Approvals



### General Information

Product Name	KULT6
Connection Method	Screw Connection with spring support
Rating	1000 V / 41 A / 6 mm <sup>2</sup> / 1.4 Nm
HSN Number	8904476703460
Standard Packing Qty (in No)	100
Country Of Origin	India
Screw thread	M3.5

### Dimensions & Weight

Width	8 mm	0.31 inch
Length	53 mm	2.09 inch
Height	58.6 mm	2.31 inch
Weight of std. Packing Unit	1.98 Kg	

### Material Data

Insulating Material	Polyamide 6,6
Standard Colour	Gray
Colour Variants	Red, Yellow, Blue, Black, Green, Khakhi

### Rated Conductor Size

Conductor cross section flexible min	0.5 mm <sup>2</sup>
Conductor cross section flexible max	6 mm <sup>2</sup>
Conductor cross section solid min	0.5 mm <sup>2</sup>
Conductor cross section solid max	10 mm <sup>2</sup>

### Rated Conductor Size

Conductor cross section flexible min	0.5 mm <sup>2</sup>
Conductor cross section flexible max	6 mm <sup>2</sup>

Conductor cross section solid min	0.5 mm <sup>2</sup>
Conductor cross section solid max	10 mm <sup>2</sup>

### Ratings - ATEX

ATEX Standard	EN 60079-7
ATEX Nominal Voltage U <sub>n</sub>	750 V
ATEX Nominal Current I <sub>n</sub>	41 A
ATEX Cross Sec. Flexible Max.	6 mm <sup>2</sup>

### Ratings - CSA

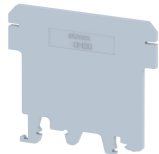
CSA Standard	CSA C22.2 NO 158
B - CSA Nominal Voltage U <sub>N</sub>	600 V
B - CSA Nominal Current I <sub>N</sub>	45 A
B - CSA Wire Min	24 AWG
B - CSA Wire Max	8 AWG



### Ratings - UL


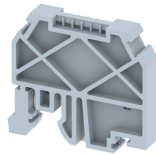
UL Standard	UL1059
B - UL Nominal Voltage U <sub>N</sub>	600 V
B - UL Nominal Current I <sub>N</sub>	45 A
B - UL Wire Min	24 AWG
B - UL Wire Max	8 AWG

### Product Accessories

Cover Profile		
PCK3	Height : 28.00 mm Width : 58.35 mm Thickness : 1.00 mm	

Cover Profile Carrier		
UHDD	Height : 74.50 mm Thickness : 2.00 mm Length : 55.82 mm	

DIN Rail Perforated		
CHKDS	Height : 15.00 mm Width : 35.00 mm Thickness : 1.50 mm Length : 2,000.00 mm	
CHKS	Height : 7.50 mm Width : 35.00 mm Thickness : 1.00 mm	

<b>DIN Rail Perforated</b>		
CHS	Height : 15.00 mm Width : 32.00 mm Thickness : 1.50 mm	
<b>DIN Rail, Unperforated</b>		
CHKD	Height : 15.00 mm Width : 35.00 mm Thickness : 1.50 mm	
CHK	Height : 7.50 mm Width : 35.00 mm Thickness : 1.00 mm	
<b>End Cap</b>		
CHKENDCAP	Height : 14.00 mm Width : 9.00 mm Length : 41.50 mm	
<b>End Clamp</b>		
SCEC35	Height : 31.50 mm Width : 8.00 mm Length : 45.80 mm	
SCUP	Height : 34.00 mm Width : 9.00 mm Length : 44.75 mm	
SCUSL	Height : 41.10 mm Width : 8.00 mm Length : 47.50 mm	
SCUDD	Height : 50.00 mm Width : 10.00 mm Length : 55.60 mm	
DCKN	Height : 33.00 mm Width : 6.00 mm Length : 43.50 mm	
DCKN10	Height : 35.00 mm Width : 10.00 mm Length : 43.50 mm	

<b>End Clamp</b>		
SCKN	Height : 34.50 mm Width : 8.00 mm Length : 44.90 mm	
SCUN	Height : 35.50 mm Width : 9.50 mm Length : 50.60 mm	
<b>End Cover</b>		
KPSL	Height : 46.60 mm Width : 2.50 mm Length : 52.00 mm	
<b>Fixed Bridge</b>		
CCLAK6-2W	Height : 24.00 mm Pitch : 8.05 mm Length : 13.50 mm	
CCLAK6-10W	Height : 24.00 mm Pitch : 8.05 mm Length : 78.10 mm	
CCLAK6-3W	Height : 24.00 mm Pitch : 8.05 mm Length : 21.60 mm	
CCLAK6-4W	Height : 24.00 mm Pitch : 8.05 mm Length : 29.70 mm	
CCLAK6-5W	Height : 24.00 mm Pitch : 8.05 mm Length : 37.75 mm	
<b>Insertion Bridge</b>		
SLC6SL-2W	Width : 14.60 mm Pitch : 8.00 mm Length : 34.00 mm	
<b>Marker For Terminal Blocks</b>		
LABEL KN8	Height : 2.43 mm Width : 8.00 mm Length : 8.50 mm	

Partition Plate		
KBZF	Height : 65.00 mm Width : 1.50 mm Length : 65.00 mm	

Marker carriers		
SCUDDMLH	Height : 71.50 mm Width : 11.00 mm Length : 55.60 mm	
SCUNMLH	Height : 53.50 mm Width : 11.00 mm Length : 50.60 mm	
DCKNMLH	Height : 45.00 mm Width : 10.00 mm Length : 43.50 mm	
SCKNMLH	Height : 42.00 mm Width : 16.00 mm Length : 44.70 mm	

