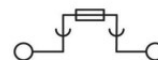
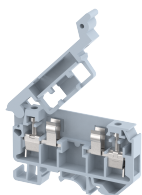


KUFH4

Terminal Type - KUFH4, Fuse terminal block, nominal voltage: 800 V, nominal current: 12 A, Rated cross-section – 4 mm², suitable size of cartridge fuse: 6.30X32 mm, connection method: Screw connection, number of connections: 2, cross-section: 0.5 mm² - 6 mm², AWG: 24 -10, mounting type: TS 35/7.5, TS 35/15, TS 32



Approvals



General Information

Product Name	KUFH4
Connection Method	Screw Connection
Rating	800 V / 12 A / 4 mm ² / 0.5 Nm
HSN Number	8904476704498
Standard Packing Qty (in No)	100
Country Of Origin	India
Screw thread	M3

Dimensions & Weight

Width	9 mm	0.35 inch
Length	78.4 mm	3.09 inch
Height	54.4 mm	2.14 inch
Weight of std. Packing Unit	2.47 Kg	

Material Data

Insulating Material	Polyamide 6,6
Standard Colour	Gray
Colour Variants	Red, Yellow, Blue, Black, Green, Khakhi

Rated Conductor Size

Conductor cross section flexible min	0.5 mm ²
Conductor cross section flexible max	4 mm ²
Conductor cross section solid min	0.5 mm ²
Conductor cross section solid max	6 mm ²

Rated Conductor Size

Conductor cross section flexible min	0.5 mm ²
Conductor cross section flexible max	4 mm ²

Conductor cross section solid min	0.5 mm ²
Conductor cross section solid max	6 mm ²

Ratings - ATEX

ATEX Standard	EN-60079-7
ATEX Nominal Voltage U _n	750 V
ATEX Nominal Current I _n	5 A
ATEX Cross Sec. Flexible Max.	4 mm ²


Ratings - CSA


CSA Standard	CSA C22.2 NO 158
B - CSA Nominal Voltage U _N	600 V
B - CSA Nominal Current I _N	12 A
B - CSA Wire Min	24 AWG
B - CSA Wire Max	10 AWG

Ratings - UL




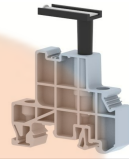
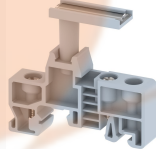
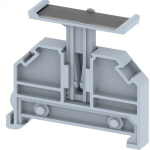
UL Standard	UL 1059
B - UL Nominal Voltage U _N	600 V
B - UL Nominal Current I _N	12 A
B - UL Wire Min	24 AWG
B - UL Wire Max	10 AWG

Product Accessories

DIN Rail Perforated		
CHKDS	Height : 15.00 mm Width : 35.00 mm Thickness : 1.50 mm Length : 2,000.00 mm	
CHKS	Height : 7.50 mm Width : 35.00 mm Thickness : 1.00 mm	
CHS	Height : 15.00 mm Width : 32.00 mm Thickness : 1.50 mm	

DIN Rail, Unperforated		
CHKD	Height : 15.00 mm Width : 35.00 mm Thickness : 1.50 mm	

DIN Rail, Unperforated		
CHK	Height : 7.50 mm Width : 35.00 mm Thickness : 1.00 mm	
End Cap		
CHKENDCAP	Height : 14.00 mm Width : 9.00 mm Length : 41.50 mm	
End Clamp		
SCUP	Height : 34.00 mm Width : 9.00 mm Length : 44.75 mm	
SCEC35	Height : 31.50 mm Width : 8.00 mm Length : 45.80 mm	
SCUSL	Height : 41.10 mm Width : 8.00 mm Length : 47.50 mm	
SCUDD	Height : 50.00 mm Width : 10.00 mm Length : 55.60 mm	
DCKN	Height : 33.00 mm Width : 6.00 mm Length : 43.50 mm	
DCKN10	Height : 35.00 mm Width : 10.00 mm Length : 43.50 mm	
SCKN	Height : 34.50 mm Width : 8.00 mm Length : 44.90 mm	
SCUN	Height : 35.50 mm Width : 9.50 mm Length : 50.60 mm	

End Cover		
EPFH	Height : 41.90 mm Width : 1.50 mm Length : 71.25 mm	
Marker For Terminal Blocks		
LABEL KN 9	Width : 9.00 mm	
Partition Plate		
KBZF	Height : 65.00 mm Width : 1.50 mm Length : 65.00 mm	
Marker carriers		
SCUDDMLH	Height : 71.50 mm Width : 11.00 mm Length : 55.60 mm	
SCUNMLH	Height : 53.50 mm Width : 11.00 mm Length : 50.60 mm	
DCKNMLH	Height : 45.00 mm Width : 10.00 mm Length : 43.50 mm	
SCKNMLH	Height : 42.00 mm Width : 16.00 mm Length : 44.70 mm	