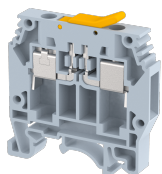


KUDT6

Terminal Type - KUDT6, Knife Disconnect Terminal Block, nominal voltage: 800 V, nominal current: 32 A, Rated cross-section: 6.0mm², connection method: Screw connection, number of connections: 2, cross section: 0.5 mm² - 10 mm², mounting type: TS 35/7.5, TS 35/15, TS 32



Approvals



General Information

Product Name	KUDT6
Connection Method	Screw Connection
Rating	800 V / 32 A / 6 mm ² / 0.8 Nm
HSN Number	85389000
Standard Packing Qty (in No)	100
Country Of Origin	India
Screw thread	M3.5

Dimensions & Weight

Width	8 mm	0.31 inch
Length	53 mm	2.09 inch
Height	55.4 mm	2.18 inch
Weight of std. Packing Unit	1.99 Kg	

Material Data

Insulating Material	Polyamide 6,6
Standard Colour	Gray
Colour Variants	Red, Yellow, Blue, Black, Green, Khakhi

Rated Conductor Size

Conductor cross section flexible min	0.5 mm ²
Conductor cross section flexible max	6 mm ²
Conductor cross section solid min	0.5 mm ²
Conductor cross section solid max	10 mm ²

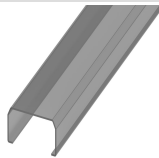
Rated Conductor Size

Conductor cross section flexible min	0.5 mm ²
Conductor cross section flexible max	6 mm ²

Conductor cross section solid min	0.5 mm ²
Conductor cross section solid max	10 mm ²

Product Accessories

Cover Profile

PCK3	Height : 28.00 mm Width : 58.35 mm Thickness : 1.00 mm	
------	--------------------------------------------------------------	-------------------------------------------------------------------------------------

Cover Profile Carrier

UHDD	Height : 74.50 mm Thickness : 2.00 mm Length : 55.82 mm	
------	---------------------------------------------------------------	-------------------------------------------------------------------------------------

DIN Rail Perforated

CHKDS	Height : 15.00 mm Width : 35.00 mm Thickness : 1.50 mm Length : 2,000.00 mm	
CHKS	Height : 7.50 mm Width : 35.00 mm Thickness : 1.00 mm	
CHS	Height : 15.00 mm Width : 32.00 mm Thickness : 1.50 mm	

DIN Rail, Unperforated

CHKD	Height : 15.00 mm Width : 35.00 mm Thickness : 1.50 mm	
CHK	Height : 7.50 mm Width : 35.00 mm Thickness : 1.00 mm	

End Cap

CHKENDCAP	Height : 14.00 mm Width : 9.00 mm Length : 41.50 mm	
-----------	-----------------------------------------------------------	---------------------------------------------------------------------------------------

End Clamp

SCEC35	Height : 31.50 mm Width : 8.00 mm Length : 45.80 mm	
--------	-----------------------------------------------------------	---------------------------------------------------------------------------------------

End Clamp		
SCUDD	Height : 50.00 mm Width : 10.00 mm Length : 55.60 mm	
SCUSL	Height : 41.10 mm Width : 8.00 mm Length : 47.50 mm	
DCKN	Height : 33.00 mm Width : 6.00 mm Length : 43.50 mm	
DCKN10	Height : 35.00 mm Width : 10.00 mm Length : 43.50 mm	
SCKN	Height : 34.50 mm Width : 8.00 mm Length : 44.90 mm	
SCUN	Height : 35.50 mm Width : 9.50 mm Length : 50.60 mm	
End Cover		
KPSD4	Height : 41.30 mm Width : 1.50 mm Length : 52.00 mm	
Insertion Bridge		
KSLD6-2W	Width : 15.00 mm Pitch : 8.00 mm Length : 34.00 mm	
KSLD6-10W	Width : 79.00 mm Pitch : 8.00 mm Length : 34.00 mm	
KSLD6-3W	Width : 23.00 mm Pitch : 8.00 mm Length : 34.00 mm	
KSLD6-4W	Width : 31.00 mm Pitch : 8.00 mm Length : 34.00 mm	

Insertion Bridge		
KSLD6-5W	Width : 39.00 mm Pitch : 8.00 mm Length : 34.00 mm	
KSLD6-7W	Height : 34.00 mm Width : 3.20 mm Thickness : 1.20 mm Pitch : 8.00 mm Length : 55.00 mm	
Marker For Terminal Blocks		
LABEL KN8	Height : 2.43 mm Width : 8.00 mm Length : 8.50 mm	
Partition Plate		
KBZF	Height : 65.00 mm Width : 1.50 mm Length : 65.00 mm	
Marker carriers		
SCUDDMLH	Height : 71.50 mm Width : 11.00 mm Length : 55.60 mm	
SCUNMLH	Height : 53.50 mm Width : 11.00 mm Length : 50.60 mm	
GMH10	Height : 51.00 mm Width : 10.00 mm Length : 42.25 mm	
GMH20	Height : 51.00 mm Width : 20.00 mm Length : 42.25 mm	
SCKNMLH	Height : 42.00 mm Width : 16.00 mm Length : 44.70 mm	