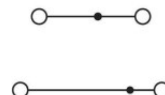
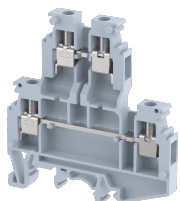


KUDD4N

Terminal Type - KUDD4N , Multi level terminal block for photo voltaic applications, nominal voltage: 630 V, nominal current: 28 A, connection method: Screw connection, number of connections: 4, cross section: 0.5 mm² - 4 mm², AWG: 20 - 12 , mounting type: TS 35/7.5, TS 35/15 , TS 32



Approvals



General Information

Product Name	KUDD4N
Connection Method	Screw Connection
Rating	630 V / 28 A / 4 mm ² / 0.5 Nm
HSN Number	85389000
Standard Packing Qty (in No)	100
Country Of Origin	INDIA
Screw thread	M3

Dimensions & Weight

Width	6 mm	0.24 inch
Length	62.5 mm	2.46 inch
Height	65.4 mm	2.57 inch
Weight of std. Packing Unit	1.76 Kg	

Material Data

Insulating Material	Polyamide 6,6
Standard Colour	Gray
Colour Variants	Red, Yellow, Blue, Black, Green, Khakhi

Rated Conductor Size

Conductor cross section flexible min	0.5 mm ²
Conductor cross section flexible max	4 mm ²
Conductor cross section solid min	0.5 mm ²
Conductor cross section solid max	4 mm ²

Rated Conductor Size

Conductor cross section flexible min	0.5 mm ²
Conductor cross section flexible max	4 mm ²

Conductor cross section solid min	0.5 mm ²
Conductor cross section solid max	4 mm ²

Ratings - UL



UL Standard	UL 1059
B - UL Nominal Voltage U _N	300 V
B - UL Nominal Current I _N	20 A
B - UL Wire Min	20 AWG
B - UL Wire Max	12 AWG

Product Accessories

DIN Rail Perforated

CHKDS	Height : 15.00 mm Width : 35.00 mm Thickness : 1.50 mm Length : 2,000.00 mm	
CHKS	Height : 7.50 mm Width : 35.00 mm Thickness : 1.00 mm	
CHS	Height : 15.00 mm Width : 32.00 mm Thickness : 1.50 mm	

DIN Rail, Unperforated

CHKD	Height : 15.00 mm Width : 35.00 mm Thickness : 1.50 mm	
CHK	Height : 7.50 mm Width : 35.00 mm Thickness : 1.00 mm	



End Cap

CHKENDCAP	Height : 14.00 mm Width : 9.00 mm Length : 41.50 mm	
-----------	---	---


End Clamp


SCUP	Height : 34.00 mm Width : 9.00 mm Length : 44.75 mm	
------	---	---

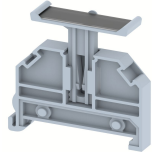
End Clamp		
SCEC35	Height : 31.50 mm Width : 8.00 mm Length : 45.80 mm	
SCUSL	Height : 41.10 mm Width : 8.00 mm Length : 47.50 mm	
SCUDD	Height : 50.00 mm Width : 10.00 mm Length : 55.60 mm	
DCKN	Height : 33.00 mm Width : 6.00 mm Length : 43.50 mm	
DCKN10	Height : 35.00 mm Width : 10.00 mm Length : 43.50 mm	
SCKN	Height : 34.50 mm Width : 8.00 mm Length : 44.90 mm	
SCUN	Height : 35.50 mm Width : 9.50 mm Length : 50.60 mm	
End Cover		
KPDDN	Height : 62.50 mm Width : 1.50 mm Length : 56.00 mm	
Fixed Bridge		
CCLADDN-2W	Height : 14.00 mm Pitch : 6.00 mm Length : 11.00 mm	
CCLADDN-10W	Height : 14.00 mm Pitch : 6.00 mm Length : 59.00 mm	
CCLADDN-3W	Height : 14.00 mm Pitch : 6.00 mm Length : 17.00 mm	

Fixed Bridge		
CCLADDN-4W	Height : 14.00 mm Pitch : 6.00 mm Length : 23.00 mm	
CCLADDN-6W	Height : 14.00 mm Pitch : 6.00 mm Length : 35.00 mm	

Insertion Bridge		
SLC4N-10W	Height : 23.00 mm Width : 3.00 mm Pitch : 6.00 mm Length : 58.60 mm	
SLC4N-3W	Height : 23.00 mm Width : 3.00 mm Pitch : 6.00 mm Length : 16.65 mm	
SLC4N-4W	Height : 23.00 mm Width : 3.00 mm Pitch : 6.00 mm Length : 22.65 mm	
SLC4N-5W	Height : 23.00 mm Width : 3.00 mm Pitch : 6.00 mm Length : 28.65 mm	
SLC4N-6W	Height : 23.00 mm Width : 3.00 mm Pitch : 6.00 mm Length : 34.65 mm	
SLC4N-2W	Height : 23.00 mm Width : 3.00 mm Pitch : 6.00 mm Length : 10.91 mm	

Marker For Terminal Blocks		
LABEL KN5.5	Height : 2.42 mm Width : 6.00 mm Length : 7.50 mm	

Marker carriers		
SCUDDMLH	Height : 71.50 mm Width : 11.00 mm Length : 55.60 mm	

Marker carriers		
SCUNMLH	Height : 53.50 mm Width : 11.00 mm Length : 50.60 mm	
DCKNMLH	Height : 45.00 mm Width : 10.00 mm Length : 43.50 mm	
SCKNMLH	Height : 42.00 mm Width : 16.00 mm Length : 44.70 mm	