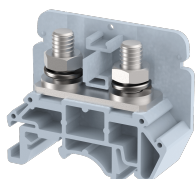


## KBTM6

Terminal Type - KBTM6 , Feed Through Terminal Block , nominal voltage: 800 V, nominal current: 101 A, connection method: Bolt Connection - Nut driver operated , number of connections: 2, cross section: 6 mm<sup>2</sup> - 25 mm<sup>2</sup>, Rated Cross-section : 25 mm<sup>2</sup> , AWG: 14 - 4, mounting type: TS 35/7.5, TS 35/15 , TS 32



### Approvals



### General Information

Product Name	KBTM6
Connection Method	Bolt Connection
Rating	800 V / 101 A / 25 mm <sup>2</sup> / 2.5 Nm
HSN Number	8904476704559
Standard Packing Qty (in No)	50
Country Of Origin	INDIA
Screw thread	M6

### Dimensions & Weight

Width	17 mm	0.67 inch
Length	50 mm	1.97 inch
Height	41.4 mm	1.63 inch
Weight of std. Packing Unit	1.61 Kg	

### Material Data

Insulating Material	Polyamide 6,6
Standard Colour	Gray
Colour Variants	Red, Yellow, Blue, Black, Green, Khakhi

### Rated Conductor Size

Conductor cross section flexible min	6 mm <sup>2</sup>
Conductor cross section flexible max	25 mm <sup>2</sup>
Conductor cross section solid min	6 mm <sup>2</sup>
Conductor cross section solid max	25 mm <sup>2</sup>

### Rated Conductor Size

Conductor cross section flexible min	6 mm <sup>2</sup>
Conductor cross section flexible max	25 mm <sup>2</sup>

Conductor cross section solid min	6 mm <sup>2</sup>
Conductor cross section solid max	25 mm <sup>2</sup>

### Ratings - ATEX


ATEX Standard	EN 60079-7
ATEX Nominal Voltage U <sub>n</sub>	800 V
ATEX Nominal Current I <sub>n</sub>	76 A
ATEX Cross Sec. Flexible Max.	25 mm <sup>2</sup>

### Ratings - UL

UL Standard	UL 1059
B - UL Nominal Voltage U <sub>N</sub>	600 V
B - UL Nominal Current I <sub>N</sub>	85 A
B - UL Wire Min	14 AWG
B - UL Wire Max	4 AWG

### Product Accessories

Cover Profile		
PCC3K	Height : 17.50 mm Width : 50.00 mm Thickness : 1.50 mm	
PCCM 51K	Height : 13.00 mm Thickness : 1.35 mm Length : 49.40 mm	
PCCM34K	Height : 13.00 mm Thickness : 1.25 mm Length : 34.00 mm	

DIN Rail Perforated		
CHKDS	Height : 15.00 mm Width : 35.00 mm Thickness : 1.50 mm Length : 2,000.00 mm	
CHKS	Height : 7.50 mm Width : 35.00 mm Thickness : 1.00 mm	
CHS	Height : 15.00 mm Width : 32.00 mm Thickness : 1.50 mm	

<b>DIN Rail, Unperforated</b>		
CHKD	Height : 15.00 mm Width : 35.00 mm Thickness : 1.50 mm	
CHK	Height : 7.50 mm Width : 35.00 mm Thickness : 1.00 mm	
<b>End Cap</b>		
CHKENDCAP	Height : 14.00 mm Width : 9.00 mm Length : 41.50 mm	
<b>End Clamp</b>		
SCUP	Height : 34.00 mm Width : 9.00 mm Length : 44.75 mm	
SCEC35	Height : 31.50 mm Width : 8.00 mm Length : 45.80 mm	
SCUSL	Height : 41.10 mm Width : 8.00 mm Length : 47.50 mm	
SCUDD	Height : 50.00 mm Width : 10.00 mm Length : 55.60 mm	
DCKN	Height : 33.00 mm Width : 6.00 mm Length : 43.50 mm	
DCKN10	Height : 35.00 mm Width : 10.00 mm Length : 43.50 mm	
SCKN	Height : 34.50 mm Width : 8.00 mm Length : 44.90 mm	
SCUN	Height : 35.50 mm Width : 9.50 mm Length : 50.60 mm	

<b>End Cover</b>		
KPS4	Height : 32.00 mm Width : 1.50 mm Length : 50.00 mm	
<b>Insertion Bridge</b>		
KSL6-10W	Width : 160.50 mm Pitch : 17.00 mm Length : 28.50 mm	
KSL6-2W	Width : 24.50 mm Pitch : 17.00 mm Length : 26.50 mm	
KSL6-3W	Width : 41.50 mm Pitch : 17.00 mm Length : 26.50 mm	
<b>Marker For Terminal Blocks</b>		
LABEL KN6.5	Width : 6.70 mm	
<b>Partition Plate</b>		
KBXF	Height : 53.40 mm Width : 1.50 mm Length : 54.00 mm	
<b>Marker carriers</b>		
SCUDDMLH	Height : 71.50 mm Width : 11.00 mm Length : 55.60 mm	
SCUNMLH	Height : 53.50 mm Width : 11.00 mm Length : 50.60 mm	
DCKNMLH	Height : 45.00 mm Width : 10.00 mm Length : 43.50 mm	
SCKNMLH	Height : 42.00 mm Width : 16.00 mm Length : 44.70 mm	