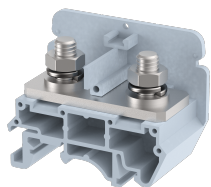


## **KBT100**

Terminal Type - KBT100 , Feed through Terminal Block, nominal voltage: 800 V, (Tested at 1100V) nominal current: 125 A, connection method: Bolt Connection - Nut driver operated, number of connections: 2, Rated Cross-section : 35 mm<sup>2</sup>, cross section: 6 mm<sup>2</sup> - 35 mm<sup>2</sup>, mounting type: TS 35/7.5, TS 35/15 , TS 32



### Approvals



### General Information

Product Name	KBT100
Connection Method	Bolt Connection
Rating	800 V / 125 A / 35 mm <sup>2</sup> / 2.5 Nm
HSN Number	85389000
Standard Packing Qty (in No)	25
Country Of Origin	INDIA
Screw thread	M6

### Dimensions & Weight

Width	26 mm	1.02 inch
Length	52 mm	2.05 inch
Height	41.4 mm	1.63 inch
Weight of std. Packing Unit	1.29 Kg	

### Material Data

Insulating Material	Polyamide 6,6
Standard Colour	Gray
Colour Variants	Red, Yellow, Blue, Black, Green, Khakhi

### Rated Conductor Size

Conductor cross section flexible min	6 mm <sup>2</sup>
Conductor cross section flexible max	35 mm <sup>2</sup>
Conductor cross section solid min	6 mm <sup>2</sup>
Conductor cross section solid max	35 mm <sup>2</sup>

### Rated Conductor Size

Conductor cross section flexible min	6 mm <sup>2</sup>
Conductor cross section flexible max	35 mm <sup>2</sup>

Conductor cross section solid min	6 mm <sup>2</sup>
Conductor cross section solid max	35 mm <sup>2</sup>

**Product Accessories**



**Cover Profile**

PCCM52K	Width : 52.00 mm Thickness : 1.25 mm Length : 49.40 mm	
PCCM78K	Width : 78.00 mm Thickness : 1.40 mm Length : 49.70 mm	

**DIN Rail Perforated**

CHKDS	Height : 15.00 mm Width : 35.00 mm Thickness : 1.50 mm Length : 2,000.00 mm	
CHKS	Height : 7.50 mm Width : 35.00 mm Thickness : 1.00 mm	
CHS	Height : 15.00 mm Width : 32.00 mm Thickness : 1.50 mm	

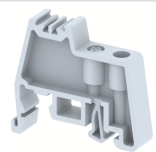
**DIN Rail, Unperforated**

CHKD	Height : 15.00 mm Width : 35.00 mm Thickness : 1.50 mm	
CHK	Height : 7.50 mm Width : 35.00 mm Thickness : 1.00 mm	

**End Cap**

CHKENDCAP	Height : 14.00 mm Width : 9.00 mm Length : 41.50 mm	
-----------	---	---

**End Clamp**

SCUP	Height : 34.00 mm Width : 9.00 mm Length : 44.75 mm	
------	---	---

<b>End Clamp</b>		
SCEC35	Height : 31.50 mm Width : 8.00 mm Length : 45.80 mm	
SCUSL	Height : 41.10 mm Width : 8.00 mm Length : 47.50 mm	
SCUDD	Height : 50.00 mm Width : 10.00 mm Length : 55.60 mm	
DCKN	Height : 33.00 mm Width : 6.00 mm Length : 43.50 mm	
DCKN10	Height : 35.00 mm Width : 10.00 mm Length : 43.50 mm	
SCKN	Height : 34.50 mm Width : 8.00 mm Length : 44.90 mm	
SCUN	Height : 35.50 mm Width : 9.50 mm Length : 50.60 mm	
<b>End Cover</b>		
KPS100	Height : 32.00 mm Width : 1.50 mm Length : 52.00 mm	
<b>Marker For Terminal Blocks</b>		
LABEL KN6.5	Width : 6.70 mm	
<b>Partition Plate</b>		
KBXF	Height : 53.40 mm Width : 1.50 mm Length : 54.00 mm	

Marker carriers		
SCUDDMLH	Height : 71.50 mm Width : 11.00 mm Length : 55.60 mm	
SCUNMLH	Height : 53.50 mm Width : 11.00 mm Length : 50.60 mm	
DCKNMLH	Height : 45.00 mm Width : 10.00 mm Length : 43.50 mm	
SCKNMLH	Height : 42.00 mm Width : 16.00 mm Length : 44.70 mm	

