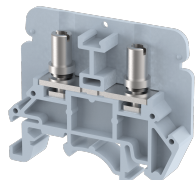


KATM3

Terminal Type - KATM3 , Feed Through Terminal Block , nominal voltage: 800 V (Tested at 1100 V), nominal current: 24 A, connection method: Bolt Connection - Screw driver operated, number of connections: 2, cross section: 0.5 mm² - 2.5 mm², AWG: 22 - 12, mounting type: TS 35/7.5, TS 35/15 , TS 32



Approvals



General Information

Product Name	KATM3
Connection Method	Bolt Connection
Rating	800 V / 24 A / 2.5 mm ² / 0.5 Nm
HSN Number	8904476704719
Standard Packing Qty (in No)	100
Country Of Origin	INDIA
Screw thread	M3

Dimensions & Weight

Width	8.5 mm	0.33 inch
Length	50 mm	1.97 inch
Height	41.4 mm	1.63 inch
Weight of std. Packing Unit	1.43 Kg	

Material Data

Insulating Material	Polyamide 6,6
Standard Colour	Gray
Colour Variants	Red, Yellow, Blue, Black, Green, Khakhi

Rated Conductor Size

Conductor cross section flexible min	0.5 mm ²
Conductor cross section flexible max	2.5 mm ²
Conductor cross section solid min	0.5 mm ²
Conductor cross section solid max	2.5 mm ²

Rated Conductor Size

Conductor cross section flexible min	0.5 mm ²
Conductor cross section flexible max	2.5 mm ²

Conductor cross section solid min	0.5 mm ²
Conductor cross section solid max	2.5 mm ²

Ratings - ATEX

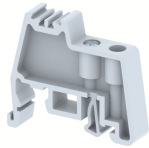
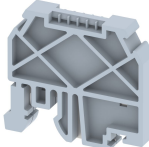
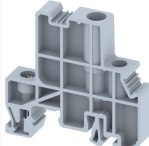

ATEX Standard	EN 60079-7
ATEX Nominal Voltage U _n	630 V
ATEX Nominal Current I _n	20 A
ATEX Cross Sec. Flexible Max.	2.5 mm ²


Ratings - UL

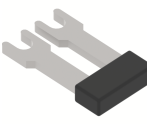
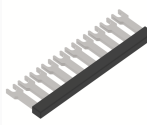
UL Standard	UL 1059
B - UL Nominal Voltage U _N	600 V
B - UL Nominal Current I _N	25 A
B - UL Wire Min	22 AWG
B - UL Wire Max	12 AWG

Product Accessories

DIN Rail Perforated		
CHKDS	Height : 15.00 mm Width : 35.00 mm Thickness : 1.50 mm Length : 2,000.00 mm	
CHKS	Height : 7.50 mm Width : 35.00 mm Thickness : 1.00 mm	
CHS	Height : 15.00 mm Width : 32.00 mm Thickness : 1.50 mm	
DIN Rail, Unperforated		
CHKD	Height : 15.00 mm Width : 35.00 mm Thickness : 1.50 mm	
CHK	Height : 7.50 mm Width : 35.00 mm Thickness : 1.00 mm	
End Cap		
CHKENDCAP	Height : 14.00 mm Width : 9.00 mm Length : 41.50 mm	

End Clamp		
SCUP	Height : 34.00 mm Width : 9.00 mm Length : 44.75 mm	
SCEC35	Height : 31.50 mm Width : 8.00 mm Length : 45.80 mm	
SCUSL	Height : 41.10 mm Width : 8.00 mm Length : 47.50 mm	
SCUDD	Height : 50.00 mm Width : 10.00 mm Length : 55.60 mm	
DCKN	Height : 33.00 mm Width : 6.00 mm Length : 43.50 mm	
DCKN10	Height : 35.00 mm Width : 10.00 mm Length : 43.50 mm	
SCKN	Height : 34.50 mm Width : 8.00 mm Length : 44.90 mm	
SCUN	Height : 35.50 mm Width : 9.50 mm Length : 50.60 mm	

End Cover		
KPS4	Height : 32.00 mm Width : 1.50 mm Length : 50.00 mm	

Insertion Bridge		
KSL3-2W	Width : 14.50 mm Pitch : 8.50 mm Length : 25.50 mm	
KSL3-10W	Width : 82.50 mm Pitch : 8.50 mm Length : 25.50 mm	

Insertion Bridge		
KSL3-3W	Width : 23.00 mm Pitch : 8.50 mm Length : 25.50 mm	
KSL3-4W	Width : 31.50 mm Pitch : 8.50 mm Length : 26.00 mm	
KSL3-5W	Width : 40.70 mm Pitch : 8.50 mm Length : 25.50 mm	
Marker For Terminal Blocks		
LABEL KN6.5	Width : 6.70 mm	
Partition Plate		
KBXF	Height : 53.40 mm Width : 1.50 mm Length : 54.00 mm	
Marker carriers		
SCUDDMLH	Height : 71.50 mm Width : 11.00 mm Length : 55.60 mm	
SCUNMLH	Height : 53.50 mm Width : 11.00 mm Length : 50.60 mm	
DCKNMLH	Height : 45.00 mm Width : 10.00 mm Length : 43.50 mm	
SCKNMLH	Height : 42.00 mm Width : 16.00 mm Length : 44.70 mm	