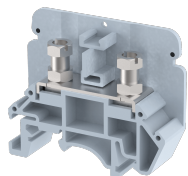


KABTM4

Terminal Type - KABTM4 , Feed Through Terminal Block , nominal voltage: 1000 V, nominal current: 57 A, connection method: Bolt Connection - Screw and Nut driver operated, number of connections: 2, cross section: 0.5 mm² - 10 mm², mounting type: TS 35/7.5, TS 35/15 , TS 32



Approvals



General Information

Product Name	KABTM4
Connection Method	Bolt Connection
Rating	1000 V / 57 A / 10 mm ² / 1.2 Nm
HSN Number	85389000
Standard Packing Qty (in No)	50
Country Of Origin	INDIA
Screw thread	M4

Dimensions & Weight

Width	13 mm	0.51 inch
Length	50 mm	1.97 inch
Height	41.4 mm	1.63 inch
Weight of std. Packing Unit	0.99 Kg	

Material Data

Insulating Material	Polyamide 6,6
Standard Colour	Gray
Colour Variants	Red, Yellow, Blue, Black, Green, Khakhi, Gray

Rated Conductor Size

Conductor cross section flexible min	0.5 mm ²
Conductor cross section flexible max	10 mm ²
Conductor cross section solid min	0.5 mm ²
Conductor cross section solid max	10 mm ²

Rated Conductor Size


Conductor cross section flexible min	0.5 mm ²
Conductor cross section flexible max	10 mm ²


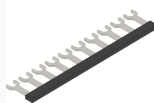
Conductor cross section solid min	0.5 mm ²
Conductor cross section solid max	10 mm ²

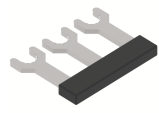
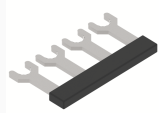
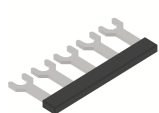
Product Accessories

Cover Profile		
PCC3K	Height : 17.50 mm Width : 50.00 mm Thickness : 1.50 mm	
PCCM26K	Height : 13.00 mm Width : 54.50 mm Thickness : 1.00 mm	
PCCM39K	Height : 3.00 mm Width : 54.50 mm Thickness : 1.00 mm	
DIN Rail Perforated		
CHKDS	Height : 15.00 mm Width : 35.00 mm Thickness : 1.50 mm Length : 2,000.00 mm	
CHKS	Height : 7.50 mm Width : 35.00 mm Thickness : 1.00 mm	
CHS	Height : 15.00 mm Width : 32.00 mm Thickness : 1.50 mm	
DIN Rail, Unperforated		
CHKD	Height : 15.00 mm Width : 35.00 mm Thickness : 1.50 mm	
CHK	Height : 7.50 mm Width : 35.00 mm Thickness : 1.00 mm	
End Cap		
CHKENDCAP	Height : 14.00 mm Width : 9.00 mm Length : 41.50 mm	


End Clamp		
SCUP	Height : 34.00 mm Width : 9.00 mm Length : 44.75 mm	
SCEC35	Height : 31.50 mm Width : 8.00 mm Length : 45.80 mm	
SCUSL	Height : 41.10 mm Width : 8.00 mm Length : 47.50 mm	
SCUDD	Height : 50.00 mm Width : 10.00 mm Length : 55.60 mm	
DCKN	Height : 33.00 mm Width : 6.00 mm Length : 43.50 mm	
DCKN10	Height : 35.00 mm Width : 10.00 mm Length : 43.50 mm	
SCKN	Height : 34.50 mm Width : 8.00 mm Length : 44.90 mm	
SCUN	Height : 35.50 mm Width : 9.50 mm Length : 50.60 mm	

End Cover		
KPS4	Height : 32.00 mm Width : 1.50 mm Length : 50.00 mm	

Insertion Bridge		
KSL4-2W	Width : 20.50 mm Pitch : 13.00 mm Length : 27.50 mm	
KSL4-10W	Width : 124.50 mm Pitch : 13.00 mm Length : 26.50 mm	

Insertion Bridge		
KSL4-3W	Width : 33.50 mm Pitch : 13.00 mm Length : 26.50 mm	
KSL4-4W	Width : 46.50 mm Pitch : 13.00 mm Length : 26.50 mm	
KSL4-5W	Width : 59.50 mm Pitch : 13.00 mm Length : 26.20 mm	

Marker For Terminal Blocks		
LABEL KN6.5	Width : 6.70 mm	

Partition Plate		
KBXF	Height : 53.40 mm Width : 1.50 mm Length : 54.00 mm	

Marker carriers		
SCUDDMLH	Height : 71.50 mm Width : 11.00 mm Length : 55.60 mm	
SCUNMLH	Height : 53.50 mm Width : 11.00 mm Length : 50.60 mm	
DCKNMLH	Height : 45.00 mm Width : 10.00 mm Length : 43.50 mm	
SCKNMLH	Height : 42.00 mm Width : 16.00 mm Length : 44.70 mm	