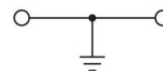
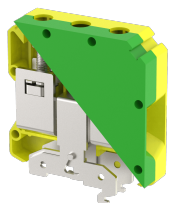


## ET50

Terminal Type - ET50 , Ground modular terminal block , connection method: Screw connection, number of connections: 2, Rated cross-section: 50 mm<sup>2</sup>, cross-section: 10 mm<sup>2</sup> - 50 mm<sup>2</sup>, mounting type: TS 35/7.5, TS 35/15 , TS 32



### Approvals



### General Information

Product Name	ET50
Connection Method	Screw Connection
Rating	50 mm <sup>2</sup> / 8 Nm
HSN Number	8904476704313
Standard Packing Qty (in No)	10
Country Of Origin	India
Screw thread	M6

### Dimensions & Weight

Width	20.5 mm	0.81 inch
Length	71 mm	2.8 inch
Height	75.8 mm	2.98 inch
Weight of std. Packing Unit	2.36 Kg	

### Material Data

Insulating Material	Polyamide 6,6
Standard Colour	Green-Yellow
Colour Variants	-

### Rated Conductor Size

Conductor cross section flexible min	16 mm <sup>2</sup>
Conductor cross section flexible max	50 mm <sup>2</sup>
Conductor cross section solid min	16 mm <sup>2</sup>
Conductor cross section solid max	50 mm <sup>2</sup>

### Rated Conductor Size

Conductor cross section flexible min	16 mm <sup>2</sup>
Conductor cross section flexible max	50 mm <sup>2</sup>
Conductor cross section solid min	16 mm <sup>2</sup>

Conductor cross section solid max	50 mm <sup>2</sup>
-----------------------------------	--------------------

**Ratings - UL**



UL Standard	
B - UL Nominal Voltage U <sub>N</sub>	0 V
B - UL Nominal Current I <sub>N</sub>	0 A
B - UL Wire Min	0 AWG
B - UL Wire Max	0 AWG

**Product Accessories**

**DIN Rail Perforated**

CHKDS	Height : 15.00 mm Width : 35.00 mm Thickness : 1.50 mm Length : 2,000.00 mm	
CHKS	Height : 7.50 mm Width : 35.00 mm Thickness : 1.00 mm	
CHS	Height : 15.00 mm Width : 32.00 mm Thickness : 1.50 mm	

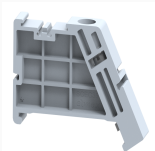
**DIN Rail, Unperforated**

CHKD	Height : 15.00 mm Width : 35.00 mm Thickness : 1.50 mm	
CHK	Height : 7.50 mm Width : 35.00 mm Thickness : 1.00 mm	

**End Cap**

CHKENDCAP	Height : 14.00 mm Width : 9.00 mm Length : 41.50 mm	
-----------	---	---

**End Clamp**

SCUP	Height : 34.00 mm Width : 9.00 mm Length : 44.75 mm	
SCEC35	Height : 31.50 mm Width : 8.00 mm Length : 45.80 mm	

<b>End Clamp</b>		
SCUSL	Height : 41.10 mm Width : 8.00 mm Length : 47.50 mm	
SCUDD	Height : 50.00 mm Width : 10.00 mm Length : 55.60 mm	
DCKN	Height : 33.00 mm Width : 6.00 mm Length : 43.50 mm	
DCKN10	Height : 35.00 mm Width : 10.00 mm Length : 43.50 mm	
SCKN	Height : 34.50 mm Width : 8.00 mm Length : 44.90 mm	
SCUN	Height : 35.50 mm Width : 9.50 mm Length : 50.60 mm	
<b>Marker For Terminal Blocks</b>		
LABEL KN17	Width : 17.00 mm	
<b>Marker carriers</b>		
SCUDDMLH	Height : 71.50 mm Width : 11.00 mm Length : 55.60 mm	
SCUNMLH	Height : 53.50 mm Width : 11.00 mm Length : 50.60 mm	
SCKNMLH	Height : 42.00 mm Width : 16.00 mm Length : 44.70 mm	