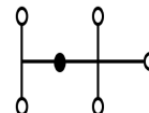
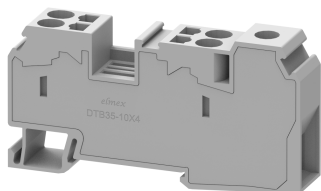


## DTB35-10X4

Terminal Type - DTB35-10, Hybrid Distribution Blocks, nominal voltage: 800 V, nominal current: 125 A, Rated cross-section -IC -35 mm<sup>2</sup>, OG - 10 mm<sup>2</sup>, connection method: Spring clamp connection, number of connections: 4, cross-section: IC - 6-35 mm<sup>2</sup> - OG - 1.5-10 mm<sup>2</sup>, mounting type: TS 35/7.5, TS 35/15



### Approvals



### General Information

Product Name	DTB35-10X4
Connection Method	Spring Cage Connection
Rating	1000 V / 125 A / IC -35 mm <sup>2</sup> , OG - 10 mm <sup>2</sup> / IC - 3 Nm
HSN Number	85389000
Standard Packing Qty (in No)	50
Country Of Origin	India
Screw thread	NAV

### Dimensions & Weight

Width	16.2 mm	0.64 inch
Length	86 mm	3.39 inch
Height	45 mm	1.77 inch
Weight of std. Packing Unit	2.45 Kg	

### Material Data

Insulating Material	Polyamide 6,6
Standard Colour	Gray
Colour Variants	Red, Yellow, Blue, Black, Green, Khakhi

### Rated Conductor Size

Conductor cross section flexible min	IC- 6 mm <sup>2</sup> , OG - 1.5 mm <sup>2</sup> mm <sup>2</sup>
Conductor cross section flexible max	IC- 35 mm <sup>2</sup> , OG - 10 mm <sup>2</sup> mm <sup>2</sup>
Conductor cross section solid min	IC- 6 mm <sup>2</sup> , OG - 1.5 mm <sup>2</sup> mm <sup>2</sup>
Conductor cross section solid max	IC- 35 mm <sup>2</sup> , OG - 10 mm <sup>2</sup> mm <sup>2</sup>

### Rated Conductor Size

Conductor cross section flexible min	IC- 6 mm <sup>2</sup> , OG - 1.5 mm <sup>2</sup> mm <sup>2</sup>
Conductor cross section flexible max	IC- 35 mm <sup>2</sup> , OG - 10 mm <sup>2</sup> mm <sup>2</sup>

Conductor cross section solid min	IC- 6 mm <sup>2</sup> , OG - 1.5 mm <sup>2</sup> mm <sup>2</sup>
Conductor cross section solid max	IC- 35 mm <sup>2</sup> , OG - 10 mm <sup>2</sup> mm <sup>2</sup>

**Product Accessories**

**Cover Profile**

PCPDBF-5	Height : 14.10 mm Thickness : 1.50 mm Length : 113.00 mm	
----------	----------------------------------------------------------------	-------------------------------------------------------------------------------------

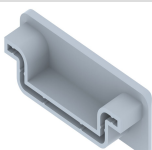
**DIN Rail Perforated**

CHKDS	Height : 15.00 mm Width : 35.00 mm Thickness : 1.50 mm Length : 2,000.00 mm	
CHKS	Height : 7.50 mm Width : 35.00 mm Thickness : 1.00 mm	

**DIN Rail, Unperforated**

CHKD	Height : 15.00 mm Width : 35.00 mm Thickness : 1.50 mm	
CHK	Height : 7.50 mm Width : 35.00 mm Thickness : 1.00 mm	

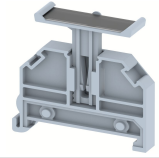
**End Cap**

CHKENDCAP	Height : 14.00 mm Width : 9.00 mm Length : 41.50 mm	
-----------	-----------------------------------------------------------	---------------------------------------------------------------------------------------

**End Clamp**

SCUP	Height : 34.00 mm Width : 9.00 mm Length : 44.75 mm	
SCEC35	Height : 31.50 mm Width : 8.00 mm Length : 45.80 mm	
SCUSL	Height : 41.10 mm Width : 8.00 mm Length : 47.50 mm	

<b>End Clamp</b>		
SCUDD	Height : 50.00 mm Width : 10.00 mm Length : 55.60 mm	
DCKN	Height : 33.00 mm Width : 6.00 mm Length : 43.50 mm	
DCKN10	Height : 35.00 mm Width : 10.00 mm Length : 43.50 mm	
SCKN	Height : 34.50 mm Width : 8.00 mm Length : 44.90 mm	
SCUN	Height : 35.50 mm Width : 9.50 mm Length : 50.60 mm	
<b>Marker For Terminal Blocks</b>		
LABEL KN12	Height : 2.43 mm Width : 12.00 mm Length : 8.50 mm	
<b>Partition Plate</b>		
DBF-5	Height : 54.00 mm Width : 3.00 mm Length : 112.00 mm	
<b>Plug-in Bridge/Jumper</b>		
SSL35	Height : 43.00 mm Width : 13.00 mm Length : 11.30 mm	
<b>Marker carriers</b>		
SCUDDMLH	Height : 71.50 mm Width : 11.00 mm Length : 55.60 mm	
SCUNMLH	Height : 53.50 mm Width : 11.00 mm Length : 50.60 mm	

Marker carriers		
DCKNMLH	Height : 45.00 mm Width : 10.00 mm Length : 43.50 mm	
SCKNMLH	Height : 42.00 mm Width : 16.00 mm Length : 44.70 mm	